

LABOR AND MATERIALS

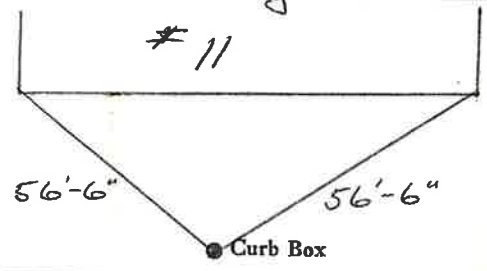
1	Copper	} Connection <u>3/4</u>	\$
	Lead		
1	Curb	} <u>3/4 in.</u>	\$
	Cock		
	Valve		
		F.S. & V.	
1	Service box	} <u>Short 3 1/4 x 4 1/4</u>	\$
	Old returned		<u>Long 4 1/2 x 5 1/2</u>
			<u>Buff or Rdway</u>
2	Ft. 1 in.	} <u>Copper</u>	\$
			<u>C.I.</u>
			<u>C.I.</u>
		Pipe at	\$
	Nipples	in. at	\$
	Bushings	to in. at	\$
	Red'g	} Coupl'gs to in. at	\$
	Inc'g		
	Union	in. at	\$
	Meter	in. at	\$
	Lead Joints	at	\$
	Compound Joints	at	\$
	Maintenance Foreman		\$
	Hrs. Water Maint. Man-1	at	\$
	Hrs. Water Maint. Man-2	at	\$
	Hrs. Garage Foreman	at	\$
	Hrs. Labor	at	\$
	Hrs. Compressor	at	\$
	Compensation Ins. at \$	per C	\$
	Trucking		\$
	Pav't Patch		\$
			\$
			\$
			\$
			\$
	O'head		\$

Tap July 17, 1979
The Coca-Cola Co.

Kathrine St. Pl.
Ave. No. 11

Name of Owner
East End Enterprises

Labor and Mat'l. Report July 17, 1979

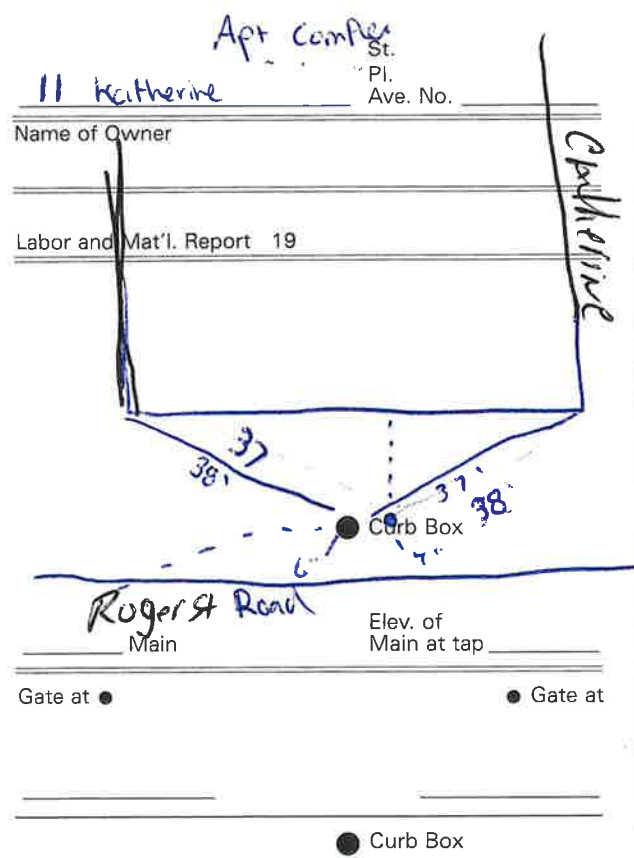


12" Main Elev. of Main at tap 4 1/2'
Gate at • Gate at •

• Curb Box

LABOR AND MATERIALS

_____ Copper } Connection _____ \$ _____	
_____ Lead } _____	
_____ Curb } Cock _____ in. \$ _____	
_____ } Valve _____	
_____ } T.S. & V. _____	
_____ Service box { Short 3-1/2 x 4-1/2 } _____ \$ _____	
_____ Old returned { Long 4-1/2 x 5-1/2 } _____	
_____ Ft. _____ in. { Copper } Pipe at _____ \$ _____	
_____ } G.I.	
_____ } C.I.	
_____ Nipples _____ in. at _____ \$ _____	
_____ Bushings _____ to _____ in. at _____ \$ _____	
_____ Red'g _____	
_____ Inc'g _____	
_____ Union _____ in. at _____ \$ _____	
_____ Meter _____ in. at _____ \$ _____	
_____ \$ _____	
_____ Compound Joints at _____ \$ _____	
_____ Maintenance Foreman _____ \$ _____	
_____ Hrs. Water Maint. Man - 1 at _____ \$ _____	
_____ Hrs. Water Maint. Man - 2 at _____ \$ _____	
_____ Hrs. Garage Foreman _____ at _____ \$ _____	
_____ Hrs. Labor _____ at _____ \$ _____	
_____ Hrs. Compressor at _____ \$ _____	
_____ \$ _____	
_____ Trucking _____ \$ _____	
_____ Pav't Patch _____ \$ _____	
_____ \$ _____	
_____ \$ _____	
_____ \$ _____	
_____ \$ _____	
_____ \$ _____	
_____ \$ _____	



2 clean outs
 (1) 6" see above
 (1) 4" see above