

LABOR AND MATERIALS

Copper	}	Connection		\$	
Lead					
Curb	}	Cock	in.		
		Valve			
		T. S. & V.			
1 Service box	}	Short 3 1/2 x 4 1/2	}		
Old returned		Long 4 1/2 x 5 1/2			
		Buff or Rdway			
14'3" Ft.	3/4" in.	Copper	}	Pipe at	
		G. I.			
		G. I.			
Nipples		in. at			\$
Bushings		to in. at			\$
Red'g	}	Coupl'gs	to in. at		\$
Inc'g					
Union		in. at			\$
Meter		in. at			\$
Lead Joints		at			\$
Compound Joints		at			\$
Maintenance Foreman					\$
Hrs. Water Maint. Man—1		at			\$
Hrs. Water Maint. Man—2		at			\$
Hrs. Garage Foreman		at			\$
Hrs. Labor—		at			\$
Hrs. Compressor at					\$
Compensation Ins. at \$		per C.			\$
Trucking					\$
Pav't Patch					\$
					\$
					\$
					\$
O'head					\$
					\$

St.
Pt.
Ave. No. 16

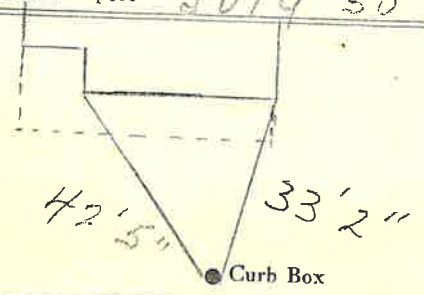
Kensington Rd.

Name of Owner _____

Booth

Located & Measured in

Labor and Mat'l. Report July 30 1954



Main

Elev. of
Main at tap

Gate at ●

● Gate at

● Curb Box