

LABOR AND MATERIALS

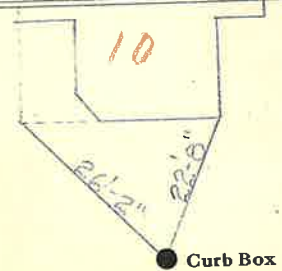
Copper } Connection \$
 Lead }
 Curb { Cock Valve } in. \$
 { T. S. & V. }
 Service Box { Short 3 1/2 x 4 1/2 }
 Old returned { Long 4 1/2 x 5 1/2 } \$
 { Buffer Rdway }
 Ft. in. { Copper } Pipe at \$
 { Galv Iron }
 { Cast Iron }
 Nipples in. at \$
 Bushings to in. at \$
 Red'g } Couplings to in. at \$
 Inc'g }
 Union in. at \$
 Meter in. at \$
 Lead Joints at \$
 Leadite Joints at \$
 Hrs. Foreman at \$
 Hrs. Chauffeur at \$
 Hrs. Tapper at \$
 Hrs. Labor at \$
 Hrs. Labor at \$
 Hrs. Compressor at \$
 Compensation Ins. \$
 Trucking \$
 Builders Use of Water \$
 \$
 \$
 \$
 \$
 \$
 \$

St- 10
 Pl: 8
 Ave. No.

Kenworthy

Name of Owner

Labor and Mat'l. Report SEP 7 - 1939 19



Main Elev. of Main at tap
 Gate at ● Gate at ●

● Curb Box

Labor and Materials		
1	Lead Connection	\$
1	Curb Cock	\$
1	Service Box (Short 3 1/2 x 4 1/2) Old returned (Buffalo)	\$
24	3/4 in. G. I. Pipe at	\$
	Nipples in. at	\$
	Bushings to in. at	\$
1	Red'g Coup 3/4 to in. at	\$
	Inc'g Coup to in. at	\$
	Union in. at	\$
	Meter in. at	\$
	Cu. Yds. Br. Stone at	\$
	Cu. Yds. Sand at	\$
	Bags Cement at	\$
	Paving Brick { Mack Red Asphalt } at	\$
2	Hrs. Foreman at	\$
11	Hrs. Common Labor at	\$
	Hrs. Mason at	\$
	Hrs. at	\$
	Hrs. at	\$
Days	Builders' Use of Water	\$
	Truck. co. at	\$
	at	\$
	at	\$
	at	\$
	Total	\$ 16.50

10 June 1925

Labor and Material Report 17

8 Kenworthy Ave

4 Main Elev. of Main at tap 4 1/2

Gate at ● Gate at ●

● Curb Box