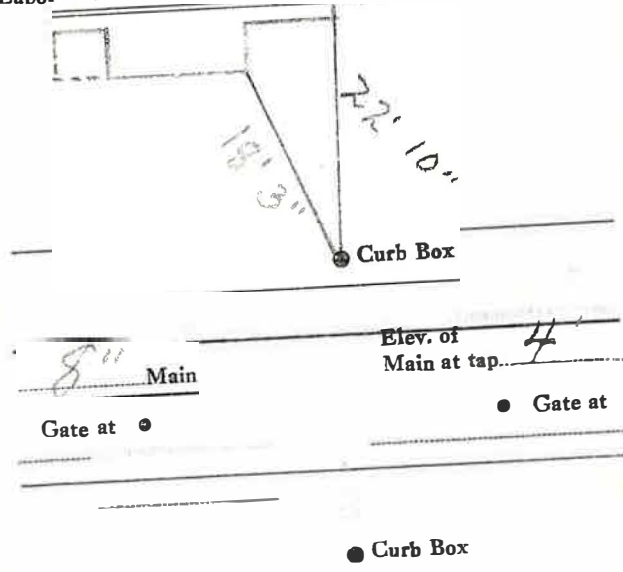


LABOR AND MATERIALS

1 Copper Connection } \$
 1 ea }
 1 Curb } Cock } 3.00 }
 T.S. & V. } in. }
 1 Service box } Short 3 1/2 x 4 1/2 }
 Old returned } Long 4 1/2 x 5 1/2 }
 Buff or Rdway* } \$
 25 Ft. 3/4 in. } Copper } Pipe at } \$
 } G.I. }
 Nipples in. at } \$
 Bushings to in at } \$
 Red'g }
 Inc'g } Coupl'gs to in. at } \$
 Union in. at } \$
 Meter in. at } \$
 Lead Joints at } \$
 Compound Joints at } \$
 Maintenance Foreman } \$
 Hrs. Water Maint. Man-1 at } \$
 Hrs. Water Maint. Man-2 at } \$
 Hrs. Garage Foreman at } \$
 Hrs. Labor at } \$
 Hrs. Compressor at } \$
 Compensation Ins. at \$ per C } \$
 Trucking } \$
 Pav't Patch } \$
 9 70 7. } \$ Co
 O'head } \$

St. _____
 Pl. _____
 Ave. No. 72
 Name of Owner Kids

40.00
 Labor and Mat'l. Report Sept. 10 1971



LSM-5C-6-1-67

18' 3" 22' 10"