

LABOR AND MATERIALS

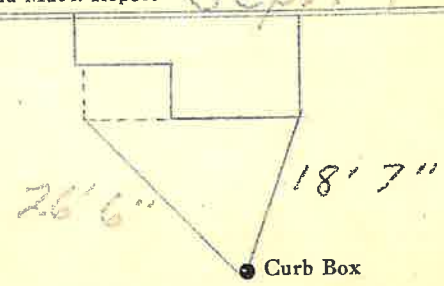
1	Copper	Connection	3/4"	\$	308
1	Curb	Cock Valve T.S. & V.	3/4 in.	\$	3.89
1	Service box	Short 3 1/2 x 4 1/2			
24'	Old returned	Long 4 1/2 x 5 1/2		\$	4.32
22	Ft.	Buff or Rdway			
		Copper			
		C.I.			
		C.I.			
		Pipe at	45	\$	9.90
	Nipples	in. at		\$	
	Bushings	to in. at		\$	
	Red'g				
	Inc'g	Coupl'gs to in. at		\$	
	Union	in. at		\$	
	Meter	in. at		\$	
	Lead Joints	at		\$	
	Compound Joints	at		\$	
	Maintenance Foreman			\$	
6	Hrs. Water Maint. Man-1	at		\$	
6	Hrs. Water Maint. Man-2	at 1.613		\$	9.68
	Hrs. Garage Foreman	at		\$	
22	Hrs. Labor	at 1.30		\$	28.60
	Hrs. Compressor	at		\$	
	Compensation Ins.	at \$5.686 per C		\$	2.18
	Trucking			\$	1.50
	Pav't Patch			\$	2.96
	Tap by Gifford & Co			\$	
				\$	
				\$	
	O'head			\$	
				\$	26.11

6315

St. Knight
 Pl. 54
 Ave. No. 54

Name of Owner Levison

Labor and Mat'l. Report Sept 4 1956



12"-1971
 12" Main Elev. of Main at tap 5'

Gate at • Gate at •

• Curb Box