

Labor and Materials

Copper	Connection	\$ 2.70
Lead		
Curb	Cock Valve T.S. & V. in.	\$ 2.39
Service Box	Short 3/4x4 1/2	\$ 1.45
Old returned	Long 1 1/2x5 1/2	
	Buff on Rd way	
26 Ft.	Copper Galv. Iron Cast Iron Pipe at	\$ 6.75
Nipples	in. at	\$
Bushings	to in. at	\$
Red'g	Couplings	to in. at	\$
Inc'g			
Union	in. at	\$
Meter	in. at	\$
Lbs. Br. Stone	at	\$
Lbs. Sand	at	\$
Bags Cement	at	\$
Paving Brick	Mack Red Asphalt at	\$
Lead Joints	at	\$
Leadite Joints	at	\$
2 Hrs.	Foreman at	\$ 1.25
1.6 Hrs.	Common Labor at	\$ 7.20
Hrs.	Common Labor at	\$
Hrs.	Mason at	\$
Hrs.	Mason's Helper at	\$
Hrs.	Compressor at	\$
Compensation Ins		\$ 26
Trucking		\$ 1. =
Builders' Use of Water	Patch	\$ 5. =
Total			\$ 28.00

30-58

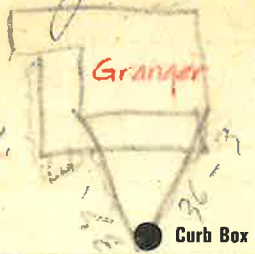
Labor and Material Report

May 27 1930

5474? Knight 89

76

See below.



12" 1971

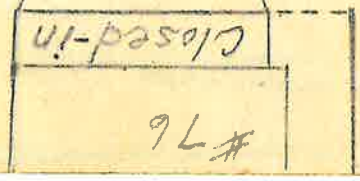
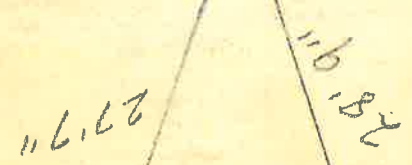
Main

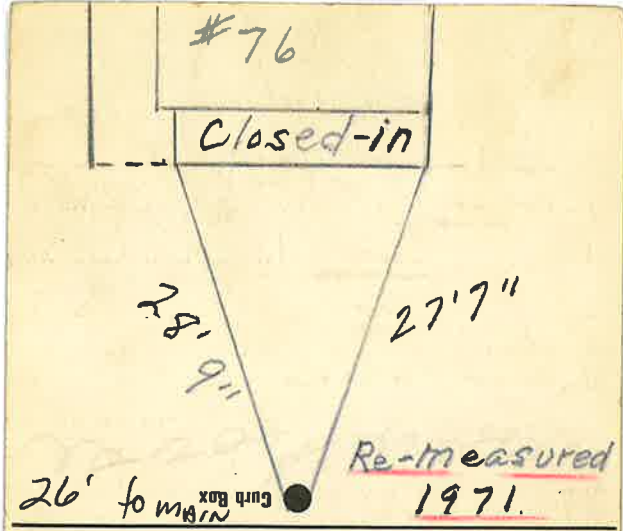
Elev of Main at tap 5'

Gate at

Gate at

26' of Main to Curb Box
Re-measured 1971





Gate at ● Gate at ●
 Main at tap Main at tap
 Elev of 5.7
 12" 1971

