

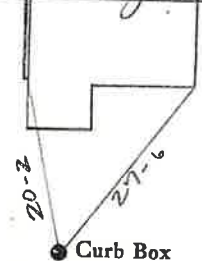
LABOR AND MATERIALS

Copper	} Connection		\$	
Lead				
Curb	} Cock } Valve } T. S. & V. }	in.	\$	
Service box		} Short 3½ x 4½ } Long 4½ x 5½ }		
Old returned				\$
Ft. in.	} Copper } G. I. } C. I. }	Pipe at	\$	
Nipples		in. at	\$	
Bushings	to	in. at	\$	
Red'g Inc'g	} Coupl'gs	to	in. at	
Union		in. at	\$	
Meter	in. at	\$		
Compound Joints	at	\$		
Maintenance Foreman		\$		
Hrs. Water Maint. Man-1	at	\$		
Hrs. Water Maint. Man-2	at	\$		
Hrs. Garage Foreman	at	\$		
Hrs. Labor	at	\$		
Hrs. Compressor	at	\$		
Trucking		\$		
Pav't Patch		\$		
		\$		
		\$		
		\$		
		\$		
		\$		
		\$		

47 Larose St. Pt. Ave. No. 47

Name of Owner

Labor and Mat'l. Report Aug 1 1930



6 Main Elev. of Main at tap 5
Gate at • Gate at

• Curb Box

Labor and Materials

4	Copper } Connection	3	\$	2.70
	Lead }			
	Curb { Cock	3	\$	2.39
	{ Valve			
	{ T. S. & V.	4		
	Service Box } Short 3/4x4 1/2		\$	1.45
	Old returned } Long 4x4 1/2			
	{ Buil. or Rdway			
1	Ft. in } Copper	3	\$	2.97
	{ Galv. Iron			
	{ Cast Iron	1		
	Nipples in. at		\$	
	Bushings to in. at		\$	
	Red'g } Couplings		\$	
	Inc'g }			
	Union in. at		\$	
	Meter in. at		\$	
	Lbs. Br. Stone at		\$	
	Lbs. Sand at		\$	
	Bags Cement at		\$	
	Paving Brick { Mack		\$	
	{ Red			
	{ Asphalt			
	Lead Joints at		\$	
	Leadite Joints at		\$	
3	Hrs. Foreman at		\$	1.88
12	Hrs. Common Labor at		\$	5.40
	Hrs. Common Labor at		\$	
	Hrs. Mason at		\$	
	Hrs. Mason's Helper at		\$	
	Hrs. Compressor at		\$	
	Compensation Ins		\$	23
	Trucking		\$	1-
	Builders' Use of Water		\$	
	Total		\$	<u>18.02</u>

30-90 47

Labor and Material Report

19

32 Larose Street



● Curb Box

Main

Elev of Main at tap

Gate at ●

● Gate at

● Curb Box

old tap to be dug up on Stevens Street.