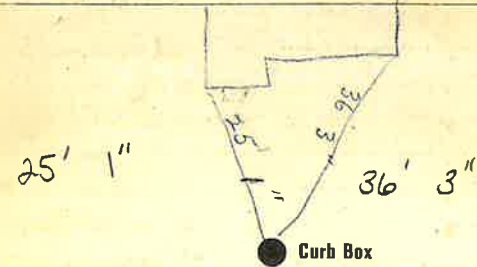


**Labor and Materials**

1/	Copper } Connection <i>3/4</i>	\$ 3.70
	Lead } .....	
1/	Curb { Cock } <i>3/4</i> in.	\$ 1.00
	Valve } .....	
	T. S. & V. } .....	
1/	Service Box { Short $3\frac{1}{2}$ x $4\frac{1}{2}$ }	\$ 1.30
	Old returned { Long $4\frac{1}{2}$ x $5\frac{1}{2}$ } Buff. or Rdway } .....	
3/1	Ft. $2\frac{1}{2}$ in. { Copper } Pipe at	\$ 6.82
	{ Galv. Iron } .....	
	{ Cast Iron } .....	
	Nipples..... in. at.....	\$
	Bushings..... to..... in. at.....	\$
1/	Red'g } Couplings <i>3/4</i> to..... in. at	\$ 1.00
	Inc'g } .....	
	Union..... in. at.....	\$
	Meter..... in. at.....	\$
	Lbs. Br. Stone at.....	\$
	Lbs. Sand at.....	\$
	Bags Cement at.....	\$
	Paving Brick { Mack } at	\$
	{ Red } .....	
	{ Asphalt } .....	
	Lead Joints at.....	\$
	Leadite Joints at.....	\$
3	Hrs. Foreman at.....	\$ 18.8
9	Hrs. Common Labor at <i>50</i>	\$ 4.50
1	Hrs. Common Labor at <i>40 1/8</i>	\$ 4.1
	Hrs. Mason at.....	\$
	Hrs. Mason's Helper at.....	\$
	Hrs. Compressor at.....	\$
	Compensation Ins.....	\$ 1.8
	Trucking.....	\$ 1.00
	Builders' Use of Water.....	\$
Total		<i>203.9</i>

*no 3 Lake cul.*



6' Main Elev. of Main at tap *4'*  
Gate at ● Gate at ●

● Curb Box

*new top  
here lower*