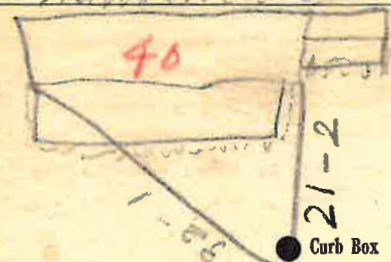


Labor and Materials

1	Copper	Connection.....	3	\$ 1.48
1	Lead	.....		\$ 1.79
1	Curb	{ Cock Valve } T.S.&V. } ..... in		\$ 1.30
1	Service Box	{ Short 3 1/2 x 4 1/2 } Old returned { Long 4 1/2 x 5 1/2 } Buff. or Edwar. }		\$ 1.44
8	Ft. .... in.	{ Copper } { Galv. Iron } { Cast Iron }		Pipe at \$ 1.44
	Nipples	..... in. at		\$
	Bushings	..... to ..... in. at		\$
	Red'g Inc'g	{ Couplings..... to ..... in. at		\$
	Union	..... in. at		\$
	Meter	..... in. at		\$
	Lbs. Br. Stone	at		\$
	Lbs. Sand	at		\$
	Bags Cement	at		\$
	Paving Brick	{ Mack } { Red } { Asphalt }		at \$
	Lead Joints	at		\$
	Leadite Joints	at		\$
3	Hrs. Foreman	at		\$ 1.88
9	Hrs. Common Labor	at <i>Tapper</i>		\$ 4.00
6	Hrs. Common Labor	at		\$ 2.70
	Hrs. Mason	at		\$
	Hrs. Masons Helper	at		\$
7	Hrs. Compressor	at		\$ 1.75
	Compensation Ins			\$ .26
	Trucking			\$ 1.00
	Builders Use of Water			\$ 9.00
	Total			\$ 26.60

532-120 40  
 Labor and Material Report Oct 7 193

32 Lawrence St



12 Main Elev. of Main at tap 4  
 Gate at ● Gate at ●

● Curb Box

*old Tap to be dug up.*

Now 38 -40

TAX ID # 303.17-2-22

*OK 9/10*