

LABOR AND MATERIALS

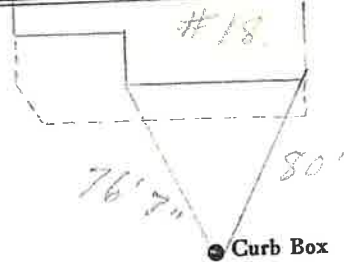
1	Copper	} Connection	2"	\$	
	Lead				
1	Curb	} Cock Valve T. S. & V.	2 in. Oriseal.	\$	
1	Service box		} Short 3 1/2 x 4 1/2 Long 4 1/2 x 5 1/2 Buff or Rdway	Oriseal Curb box.	\$
	Old returned				
49	Ft. 2 in.	} Copper C.I. C.I.	} Pipe at	\$	
	Nipples			in. at	\$
	Bushings			to in. at	\$
	Red'g	} Coupl'gs	to in. at	\$	
	Inc'g				
	Union	in. at	\$		
	Meter	in. at	\$		
	Lead Joints	at	\$		
	Compound Joints	at	\$		
	Maintenance Foreman		\$		
	Hrs. Water Maint. Man	1 at	\$		
	Hrs. Water Maint. Man	2 at	\$		
	Hrs. Garage Foreman	at	\$		
	Hrs. Labor	at	\$		
	Hrs. Compressor	at	\$		
	Compensation Ins.	at \$ per C	\$		
	Trucking		\$		
	Pav't Patch		\$		
	Tap by Lareau & Co.		\$		
	6-27-68.		\$		
	O'head		\$		

2" Tap #2

St. \_\_\_\_\_  
Pl. \_\_\_\_\_  
Ave. No. \_\_\_\_\_

Name of Owner  
Lawrence  
Kamy Inc.

Labor and Mat'l. Report June 27 1968



12" Main Elev. of Main at tap 6'  
Gate at ● Gate at ●

● Curb Box  
2" Tap #2  
Near Pearl St.  
Measured from #18  
Lawrence St.