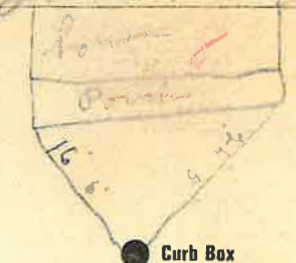


**Labor and Materials**

1	Copper	Connection	3/4	\$ 2.70
1	Curb	Cock Valve	3/4 in.	\$ 2.39
1	Service Box	Short	3 1/2 x 4 1/2	\$ 1.45
	Old returned	Long	4 1/2 x 5 1/2	
		Buff or Redway		
7	Ft. 3/4 in.	Copper		\$ 1.89
		Galv. Iron	Pipe at	
		Cast Iron		
	Nipples	in. at		\$
	Bushings	to in. at		\$
1	Red'g Inc'g	Couplings	3/4 to 1/2 in. at	\$ 1.00
	Union	in. at		\$
	Meter	in. at		\$
	Lbs. Br. Stone	at		\$
	Lbs. Sand	at		\$
	Bags Cement	at		\$
	Paving Brick	Mack Red Asphalt	at	\$
	Lead Joints	at		\$
	Leadite Joints	at		\$
13	Hrs. Foreman	at	6 2/2	\$ 8.13
10	Hrs. Common Labor	at	45	\$ 4.50
	Hrs. Common Labor	at		\$
	Hrs. Mason	at		\$
	Hrs. Mason's Helper	at		\$
4	Hrs. Compressor	at		\$ 6.38
	Compensation Ins			\$ 1.00
	Trucking			\$ 1.00
	Builders' Use of Water	Patch		\$ 25.00
Total				\$ 51.54

31-8 8 3/6 19 31

Labor and Material Report  
 Mrs. Lawrence



12" Main Eley of Main at tap 5'

Gate at TAX ID # 303.17-8-13 Gate at

Curb Box

Old Tap shut off

16' 6"

26' 5"