

Labor and Materials

1	Copper } Connection: $\frac{3}{4}$ "	\$ 1.25
	Lead }	
1	Curb { Cock Valve T.S.&V. } $\frac{3}{4}$ " in	\$ 1.70
1	Service Box { Short $3\frac{1}{2} \times 4\frac{1}{2}$ Long $4\frac{1}{2} \times 5\frac{1}{2}$ } Old returned	\$ 1.37
40	Ft. $\frac{3}{4}$ " in. { Copper Galv. Iron Cast Iron } Pipe at 12 hr.	\$ 5.00
	Nipples in. at	\$
	Bushings to in. at	\$
	Red'g Inc'g } Couplings to in. at	\$
	Union in. at	\$
	Meter in. at	\$
	Lbs. Br. Stone at	\$
	Lbs. Sand at	\$
	Bags Cement at	\$
	Paving Brick { Mack Red Asphalt } at	\$
	Lead Joints at	\$
	Leadite Joints at	\$
6	Hrs. Foreman at $\frac{47.14}{6}$	\$ 2.75
16	Hrs. Common Labor at $\frac{50}{16}$	\$ 8.-
18	Hrs. Common Labor at $\frac{45}{18}$	\$ 8.10
	Hrs. Mason at	\$
	Hrs. Masons Helper at	\$
	Hrs. Compressor at	\$
	Compensation Ins	\$.75
	Trucking	\$ 1.-
	Builders Use of Water Patch	\$ 5.-
Total		\$ 36.32

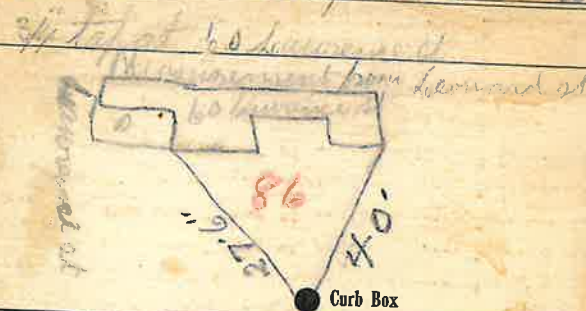
1935-12

86

Labor and Material Report

Apr 28

1935



Leonard St

6" Main

Elev. of Main at tap $\frac{5}{2}$ "

Gate at ●

● Gate at

● Curb Box

Old tap shut off to main
on Lawrence St.

015/11