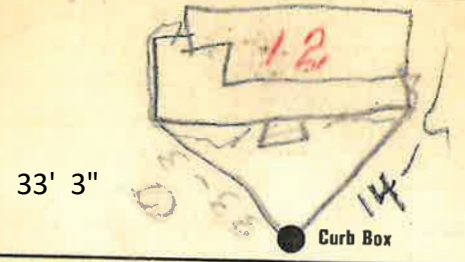


Labor and Materials

1	Copper } Connection.....	3	\$ 2.60
	Lead }		
1	Curb } Cock }	24	\$ 2.30
		4	
1	Service Box } Shore }		\$ 1.50
	Old returned } Long 4 1/2 x 5 1/2 }		
			Buff or Rdway
1	Ft. in. } Copper } Pipe at.....	3	\$ 1.59
			Galv. Iron
			Cast Iron
	Nipples..... in. at.....	4	\$
	Bushings..... to..... in. at.....		\$
	Red'g } Couplings..... to..... in. at.....		\$
	Inc'g }		\$
	Union..... in. at.....		\$
	Meter..... in. at.....		\$
	Lbs. Br. Stone at.....		\$
	Lbs. Sand at.....		\$
	Bags Cement at.....		\$
	Paving Brick } Mack } at.....		\$
			Red
			Asphalt
	Lead Joints at.....		\$
	Leadite Joints at.....		\$
3	Hrs. Foreman at.....	3.13	\$
3	Hrs. Common Labor at.....	1.11	\$
23	Hrs. Common Labor at.....	9.34	\$
	Hrs. Mason at.....		\$
	Hrs. Mason's Helper at.....		\$
2	Hrs. Compressor at.....	3.00	\$
	Compensation Ins.....	.44	\$
	Trucking.....	1.00	\$
	Builders' Use of Water Patch.....	25.00	\$
Total \$			50.90

21-108 1.20
Labor and Material Report July 10 1929

6 Lawrence St.



12 Main Elev of Main at tap 4 1/2
 Gate at ● Gate at ●

● Curb Box
Old top disconnected

TAX ID # 303.17-8-15

33' 3"

14' 5"