

Labor and Materials

1 Copper Lead Connection $\frac{3}{4}$	\$ 3.20
1 Curb { Cock Valve } $\frac{3}{4}$ in. T.S. & V.	\$ 1.00
1 Service Box { Short $3\frac{1}{2} \times 4\frac{1}{2}$ } Old returned { Long $4\frac{1}{2} \times 5\frac{1}{2}$ } Buff. or Rdway }	\$ 1.20
36 Ft. in. { Copper Galv. Iron } Pipe at { Cast Iron }	\$ 79.7
Nipples..... in. at.....	\$
Bushings..... to..... in. at.....	\$
Red'g Inc'g { Couplings..... to..... in. at.....	\$
Union..... in. at.....	\$
Meter..... in. at.....	\$
Lbs. Br. Stone at.....	\$
Lbs. Sand at.....	\$
Bags Cement 'at.....	\$
Paving Brick { Mack Red Asphalt } at.....	\$
Lead Joints at.....	\$
Leadite Joints at.....	\$
9 Hrs. Foreman at.....	\$ 1.88
2 Hrs. Common Labor at.....	\$ 1.00
7 Hrs. Common Labor at.....	\$ 2.84
Hrs. Mason at.....	\$
Hrs. Mason's Helper at.....	\$
Hrs. Compressor at.....	\$
Compensation Ins.....	\$ 1.15
Trucking.....	\$ 1.00
Builders' Use of Water.....	\$
Total \$ 20.29	

28-110

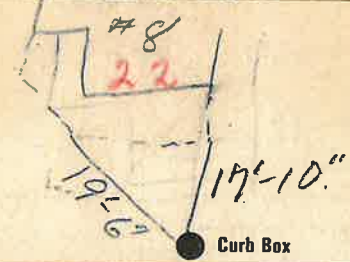
22

Aug 30

1928

Labor and Material Report

8 Leonard St



4" Main

Elev of Main at tap 5'

Gate at ●

● Gate at

● Curb Box

old Tap to be
Dug up.