

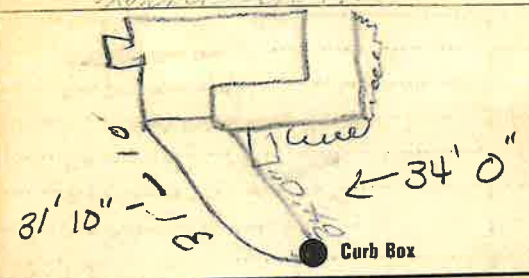
Labor and Materials

Copper } Connection.....	3	\$ 3.20
Lead } Cock		
.....Curb } Valve	1	\$ 1.00
.....T. S. & V. }		
.....Service Box } Short 3" x 4"		\$ 1.30
.....Old returned } Long 3" x 5"		
.....} Butt. or Rdway }		
40 Ft.in. } Copper	3 1/4	\$ 8.80
.....} Galv. Iron		
.....} Cast Iron		
.....Nipples.....in. at.....		\$
.....Bushings.....to.....in. at.....		\$
.....Red'g } Couplings.....to.....in. at.....		\$
.....Inc'g }		
.....Union.....in. at.....		\$
.....Meter.....in. at.....		\$
.....Lbs. Br. Stone at.....		\$
.....Lbs. Sand at.....		\$
.....Bags Cement at.....		\$
.....Paving Brick } Mack		\$
.....} Red		
.....} Asphalt }		\$
.....Lead Joints at.....		\$
.....Leadite Joints at.....		\$
4 Hrs. Foreman at.....		\$ 2.50
.....Hrs. Common Labor at.....		\$
20 Hrs. Common Labor at.....		\$ 8.13
.....Hrs. Mason at.....		\$
.....Hrs. Mason's Helper at.....		\$
.....Hrs. Compressor at.....		\$
.....Compensation Ins.....		\$ 28
.....Trucking.....		\$ 1.00
.....Builders' Use of Water.....		\$
Total	26.71	

27-132

Labor and Material Report *Aug 9* 19 *27*

25 *to main at tap*



16 Main Elev. of Main at tap *41*

Gate at *40'* to main ● Gate at

● Curb Box

Old shut off