

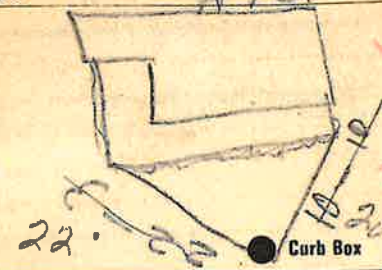
Labor and Materials

1	Copper } Connection	$\frac{3}{4}$	\$ 2.60
	Lead } Connection	$\frac{3}{4}$	
1	Curb } Cock Valve	in. $\frac{3}{4}$	\$ 2.30
		1.5" x V.	
1	Service Box } Short $3\frac{1}{2} \times 4\frac{1}{2}$	$\frac{3}{4}$	\$ 1.40
	Old returned } Long $4\frac{1}{2} \times 5\frac{1}{2}$		
		Butt. or Rdway	
8	Ft. } in. } Copper	$\frac{3}{4}$	\$ 2.12
		Galv. Iron	
		Cast Iron	
	Nipples	in. at	\$
1	Bushings	$\frac{1}{2}$ to $\frac{3}{4}$ in. at	\$.10
	Red'g } Couplings	$\frac{1}{4}$ to	\$
	Inc'g }	in. at	\$
	Union	in. at	\$
	Meter	in. at	\$
	Lbs. Br. Stone	at	\$
	Lbs. Sand	at	\$
	Bags Cement	at	\$
	Paving Brick } Mack	at	\$
		Red	
		Asphalt	
	Lead Joints	at	\$
	Leadite Joints	at	\$
2	Hrs. Foreman	at	\$ 1.25
6	Hrs. Common Labor	at	\$ 3.00
6	Hrs. Common Labor	at	\$ 2.44
	Hrs. Mason	at	\$
	Hrs. Mason's Helper	at	\$
	Hrs. Compressor	at	\$
	Compensation Ins		\$ 18
	Trucking		\$ 1.00
	Builders' Use of Water	Patch	\$ 5.00
Total \$			21.39

Labor and Material Report

June 20 1929

6 Lincoln Ave



16 Main

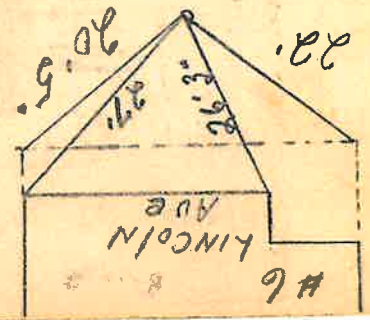
Elev of Main at tap 4

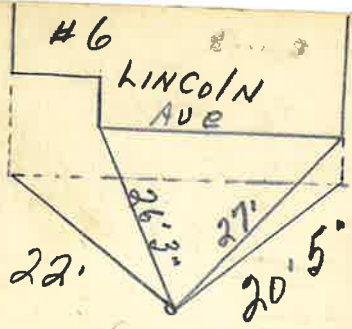
Gate at ●

● Gate at

● Curb Box

old Tap shut off





old Top shut off

● Curb Box

● Gate at

● Gate at

Elev of Main at tap 4

16 Main



6 Lincoln Ave

Labor and Material Report

20 19 29