

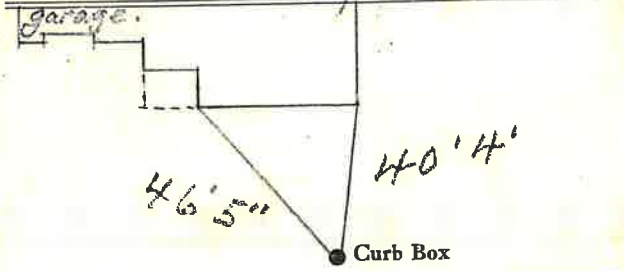
LABOR AND MATERIALS

1	Copper Lead	Connection	3/4"	\$
1	Curb	Cock Valve T.S. & V.	3/4 in.	\$
1	Service box	Short 3 1/2 x 4 1/2 Long 4 1/2 x 5 1/2 Buff. or Rdway.		\$
	Old returned			\$
11	Ft. 3/4 in.	Copper G.I. G.I.	Pipe at	\$
	Nipples	in. at		\$
	Bushings	to in. at		\$
	Red'g Inc'g	Coupl'gs. to in. at		\$
	Union	in. at		\$
	Meter	in. at		\$
	Lead Joints at			\$
	Compound Joints at			\$
	Maintenance Foreman			\$
	Hrs. Water Maint. Man-1 at			\$
	Hrs. Water Maint. Man-2 at			\$
	Hrs. Garage Foreman at			\$
	Hrs. Labor at			\$
	Hrs. Compressor at			\$
	Compensation Ins. at \$	per C		\$
	Trucking			\$
	Pav't Patch			\$
	Tap by GIFFORD & Co. 9-26-61.			\$
	O'head			\$
				\$

DR.
St.
Pl.
Ave. No. 14

MacArthur
Name of Owner
Zoltorn Gaal

Labor and Mat'l. Report Sept. 26 1961.



12" Main Elev. of Main at tap 4'

Gate at Gate at

● Curb Box