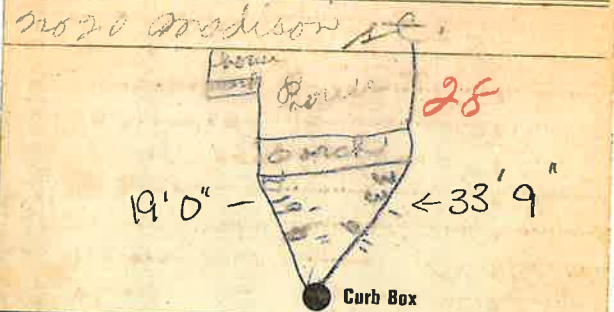


Labor and Materials

1	Copper	Connection	3/4	\$	3.20
	Lead				
1	Curb	Cock Valve T.S. & V.	3/4 in.	\$	1.80
1	Service Box	Short 3 1/2 x 4 1/2		\$	1.50
	Old returned	Long 4 1/2 x 5 1/2			
		Buff. or Redway			
910	3/4 in.	Copper Galv. Iron Pipe at		\$	1.95
		Cast Iron			
	Nipples	in. at		\$	
	Bushings	to in. at		\$	
1	Red'g Inc'g	Couplings	cop to cop	\$	
	Union	in. at		\$	
	Meter	in. at		\$	
	Lbs. Br. Stone	at		\$	
	Lbs. Sand	at		\$	
	Bags Cement	at		\$	
	Paving Brick	Mack Red Asphalt	at	\$	
	Lead Joints	at		\$	
	Leadite Joints	at		\$	
3	Hrs. Foreman	at	6.25	\$	1.87
6	Hrs. Common Labor	at	5.0	\$	3.00
	Hrs. Common Labor	at		\$	
	Hrs. Mason	at		\$	
	Hrs. Mason's Helper	at		\$	
	Hrs. Compressor	at		\$	
	Compensation Ins.			\$	1.13
465	Trucking			\$	1.80
110	Builders' Use of Water			\$	
				Total \$	13.48

7-24 28
Labor and Material Report April 26 1927



6" Main Elev. of Main at tap 5'
 Gate at ● Gate at ●

● Curb Box
 Old Top shut off