

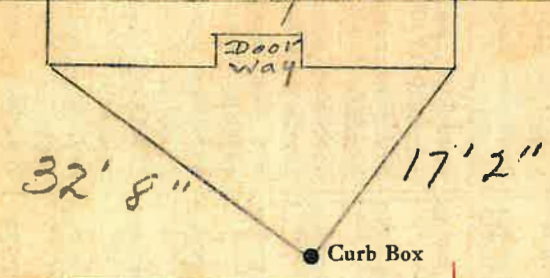
LABOR AND MATERIALS

1	Copper Lead	Connection	1"	\$	4.28
1	Curb	Cock Valve T.S. & V.	1 in.	\$	5.25
1	Service box	Short 3 1/2 x 4 1/2		\$	4.69
	Old returned	Long 4 1/2 x 5 1/2		\$	
		Buff or Rdway		\$	
10 Ft.	1 in.	Copper G.I. Pipe at	56	\$	5.60
		Nipples	in. at	\$	
		Bushings	to in. at	\$	
		Red'g Inc'g	Coupl'gs to in. at	\$	
		Union	in. at	\$	
		Meter	in. at	\$	
		Lead Joints at		\$	
		Compound Joints at		\$	
4	Maintenance Foreman		1.51	\$	12.08
	Hrs. Water Maint. Man-1	at		\$	
8	Hrs. Water Maint. Man-2	at	1.24	\$	9.92
	Hrs. Garage Foreman	at		\$	
28	Hrs. Labor	at	1.13	\$	31.64
	Hrs. Compressor at			\$	
	Compensation Ins. at	\$ 4.29 per C		\$	2.30
	Trucking			\$	1.50
	Pav't Patch			\$	15.68
	Tap by Gissard			\$	
			4-18-55	\$	
	O'head			\$	
				\$	
				\$	92.94

Maple St. Pl. Ave. No. 16

Name of Owner  
Borden's Ice Cream Co.

Labor and Mat'l. Report Apr. 18 1955



6" Main Elev. of Main at tap 5 1/2"

Gate at • Gate at •  
#16 - #18 TAX ID # 302.20-24-18  
• Curb Box

## LABOR AND MATERIALS

Copper } Connection.....	\$
Lead } .....	\$
Curb } Cock Valve T. S. & V. { .....	in. \$
Service Box } Short 3"x4" { .....	\$
Old returned } Long 4"x5" { .....	\$
	Buffer Rdway
Ft.....in. } Copper Galv Iron Cast Iron { Pipe at.....	\$
Nipples.....in. at .....	\$
Bushings .....to.....in. at .....	\$
Red'g } Couplings .....to.....in. at .....	\$
Inc'g } .....	\$
Union .....in. at .....	\$
Meter .....in. at .....	\$
Lead Joints at .....	\$
Leadite Joints at .....	\$
Hrs. Foreman at .....	\$
Hrs. Chauffeur at .....	\$
Hrs. Tapper at .....	\$
Hrs. Labor at .....	\$
Hrs. Labor at .....	\$
Hrs. Compressor at .....	\$
Compensation Ins. ....	\$
Trucking .....	\$
Builders Use of Water .....	\$
.....	\$
.....	\$
.....	\$
.....	\$
.....	\$
.....	\$
.....	\$

St. Pt. Ave. No. 16

Maple St

Name of Owner  
Barn back of Hall Ice Cream Co.

Labor and Mat'l. Report 19

---

	Elev. of Main at top.....
Main	
Gate at ●	● Gate at
● Curb Box	

Dug up + Shut off at Main June 28 43