

Labor and Materials

1	Copper	Connection	1/2"						\$
	Lead								
1	Curb	Cock Valve	5/8	in					\$
		T. S. & V.							
1	Service Box	Short	3 1/2	x 4 1/2					\$
	Old returned	Long	4 1/2	x 5 1/2					
		Buff. or Rdway							
8	Ft.	3/4	in.						\$
		Copper							
		Galv Iron							
		Cast Iron							
									\$
	Nipples								\$
	Bushings								\$
	Red'g								\$
	Inc'g								
	Union								\$
	Meter								\$
	Lead Joints								\$
	Leadite Joints								\$
	Hrs. Foreman								\$
	Hrs. Chauffeur								\$
	Hrs. Tapper								\$
	Hrs. Labor								\$
	Hrs. Labor								\$
	Hrs. Compressor								\$
	Compensation Ins.								\$
	Trucking								\$
	Builders Use of Water								\$
									\$
									\$

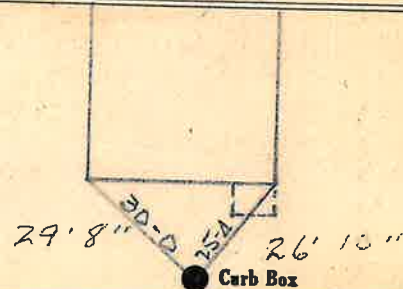
St. *Maple*
 Pt.
 Ave. No. 186

Name of Owner

Labor and Mat'l. Report

April

19*11*

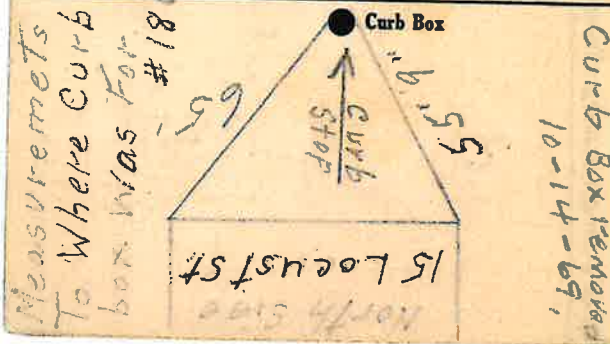


66d Main St.

Elev. of Main at tap

Gate at

Gate at



WATER DEPARTMENT

City of Glens Falls, New York

10-14-1969

A.M. P.M.

M 186 Maple St. and

Tel. Call: 188 Maple St

Turn on:

Shut off: at curb

Leak:

#186

Misc. To be dug up & disconnected at

REMARKS: main

Dug up & disconnected #188 at main

Nov. 26-69.

By: Reynolds From: Tripp To:

FORM D.O.-2000-5-1-64

Measurements
To Where Curb
box was for
#186 Maple St.

North Side
15 Locust St.

55' 9" curb stop

55' 9" Curb Box

10-14-69.

Gate at

Elev. of Main at tap

5' 5" Main

29' 8" 30'-0" 26' 10" Curb Box

1917

April

Labor and Mat'l. Report

Name of Owner

St. Maple

Pl. Ave. No. 186