

LABOR AND MATERIALS

1 Copper } Connection 1 1/2" \$ _____
 Lead }
 1 Curb } Cock } 1 1/2 in. \$ _____
 Valve }
 T. S. & V. }
 1 Service box { Short 3 1/2 x 4 1/2 }
 Old returned { Long 4 1/2 x 5 1/2 } \$ _____
 Buff or Rdway }
 9 Ft. 1 1/2 in. { Copper } Pipe at \$ _____
 { C.I. }
 { C.I. }
 Nipples in. at \$ _____
 Bushings to in. at \$ _____
 Red'g }
 Inc'g } Coupl'gs to in. at \$ _____
 Union in. at \$ _____
 Meter in. at \$ _____
 Lead Joints at \$ _____
 Compound Joints at \$ _____
 Maintenance Foreman \$ _____
 Hrs. Water Maint. Man-1 at \$ _____
 Hrs. Water Maint. Man-2 at \$ _____
 Hrs. Garage Foreman at \$ _____
 Hrs. Labor at \$ _____
 Hrs. Compressor at \$ _____
 Compensation Ins. at \$ _____ per C \$ _____
 Trucking \$ _____
 Pav't Patch \$ _____
Tap by Giggard & Co. \$ _____
10-29-58 \$ _____
 O'head \$ _____
 \$ _____

St. _____
 Ave. No. 230

Maple
 Name of Owner
Glens Falls Paper Box Co.

Labor and Mat'l. Report Oct. 29 1958

● Curb Box

6" Main Elev. of Main at tap 8'

Gate at ● ● Gate at

TAX ID # 303.18-11-11

● Curb Box

1 1/2" Tap

LSM-5C-2-556

Labor and Materials

1	Copper } Connection		\$
1	Lead } Connection		\$
1	Curb } Cock } ⁶ in		\$ 38.75
	} Active }		
	} T. S. & V. }		
1	Service Box } Short } ^{4.00} _{exte}		\$ 7.55
	Old returned } Long }		
	} Buff. or Rdway }		
12	Ft. 6" in. } Copper } Pipe at		\$ 12.00
	} Galv. Iron }		
	} Cast Iron }		
24	Nipples lead in. at ¹²		\$ 2.28
7	Bushings galv to galv in. at ¹²		\$ 58
	Red'g } Couplings to in. at		\$
	Inc'g }		
	Union in. at		\$
	Meter in. at		\$
	Lbs. Br. Stone at		\$
	Lbs. Sand at		\$
	Bags Cement at		\$
	Paving Brick } ^{Mack} } at		\$
	} ^{Red} }		
	} ^{Asphalt} }		
4	Lead Joints at ^{1.25}		\$ 5.00
	Leadite Joints at		\$
24	Hrs. Foreman at ^{6.25}		\$ 15.00
51	Hrs. Common Labor at ^{5.0}		\$ 25.50
30	Hrs. Common Labor at ^{4.0 5/8}		\$ 12.19
	Hrs. Mason at		\$
	Hrs. Mason's Helper at		\$
2	Hrs. Compressor at ^{2⁰⁰}		\$ 4.00
	Compensation Ins.		\$ 1.90
	Trucking		\$ 3.00
	Builders' Use of Water		\$
			124.89
			21.27
	Total \$		145.96
			31.3

Pavement Patch

6" Tap at ²³⁰ ~~155~~ Maple at



6" Main Elev. of Main at tap 74
 Gate at ● ● Gate at

● Curb Box

6" Tap

LABOR AND MATERIALS

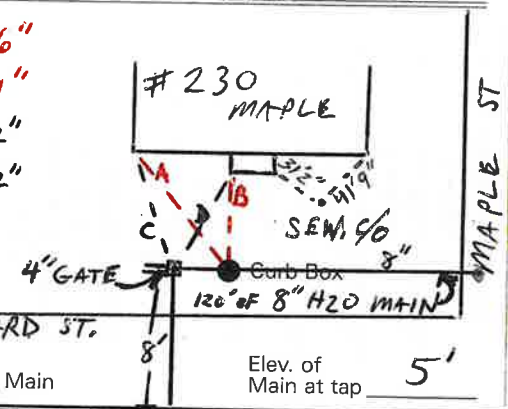
_____ Copper } Connection _____	\$ _____
_____ Lead } _____	
_____ Curb } Cock _____	\$ _____
_____ Valve } _____ in.	
_____ T.S. & V. } _____	\$ _____
_____ Service box { Short 3-1/2 x 4-1/2 }	\$ _____
_____ Old returned { Long 4-1/2 x 5-1/2 }	\$ _____
_____ Ft. _____ in. { Copper } Pipe at _____	\$ _____
_____ G.I. }	
_____ C.I. }	
_____ Nipples _____ in. at _____	\$ _____
_____ Bushings _____ to _____ in. at _____	\$ _____
_____ Red'g _____	
_____ Inc'g _____	
_____ Union _____ in. at _____	\$ _____
_____ Meter _____ in. at _____	\$ _____
_____ _____	\$ _____
_____ Compound Joints at _____	\$ _____
_____ Maintenance Foreman _____	\$ _____
_____ Hrs. Water Maint. Man - 1 at _____	\$ _____
_____ Hrs. Water Maint. Man - 2 at _____	\$ _____
_____ Hrs. Garage Foreman _____ at _____	\$ _____
_____ Hrs. Labor _____ at _____	\$ _____
_____ Hrs. Compressor at _____	\$ _____
_____ _____	\$ _____
_____ Trucking _____	\$ _____
_____ Pav't Patch _____	\$ _____
_____ _____	\$ _____
_____ _____	\$ _____
_____ _____	\$ _____
_____ _____	\$ _____
_____ _____	\$ _____

MAPLE

St. 230
Pt. Ave. No.

Name of Owner
WARREN WASHINGTON ASSOC. FOR MENTAL HEALTH
Labor and Mat'l. Report 19 **AUG - 2003**

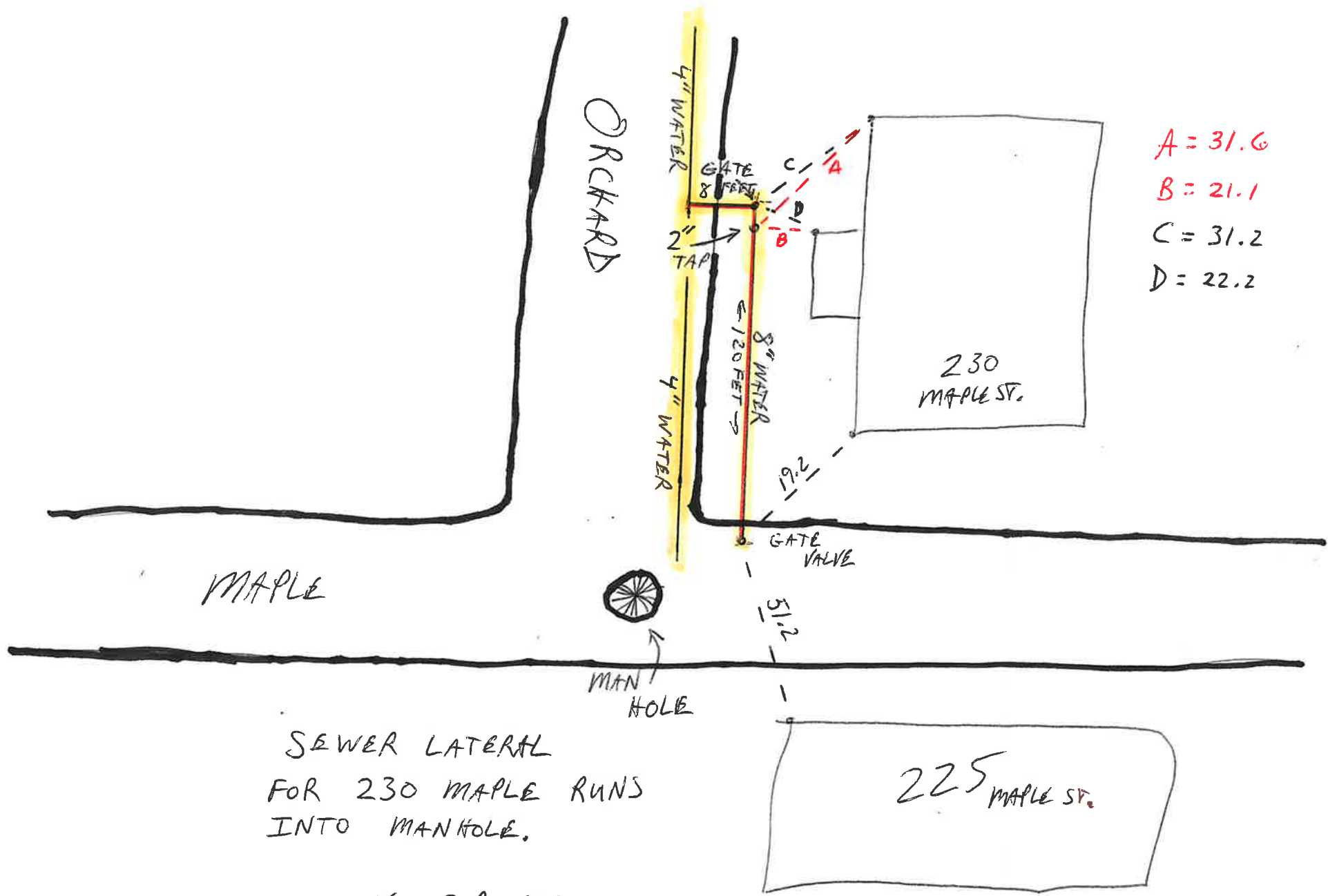
A = 31'6"
B = 21'1"
C = 31'2"
D = 22'2"



ORCHARD ST.
8" Main
Elev. of Main at tap 5'

Gate at ● Gate at ●
4" WATER MAIN

● Curb Box
RED IS 2" SERVICE
BLACK IS 4" SERVICE
PENCIL IS SEWER CLEAN OUT.



A = 31.6
 B = 21.1
 C = 31.2
 D = 22.2

SEWER LATERAL
 FOR 230 MAPLE RUNS
 INTO MANHOLE.

WAITING FOR MEASUREMENT
 TO OUTSIDE CLEAN OUT.