

LABOR AND MATERIALS

1	Copper	{ Connection	3/4	\$	2.87
1	Lead	{			
1	Curb	{ Cock Valve	3/4 in.	\$	3.62
		{ T.S. & V.			
1	Service box	{ Short 3 1/2 x 4 1/2		\$	4.68
	Old returned	{ Long 4 1/2 x 5 1/2			
		{ Buff or Rdway			
10	Ft.	{ Copper	3/4 in.	\$	3.52
		{ G.I.			
		{ C.I.	Pipe at 37		
	Nipples	in. at		\$	
	Bushings	to in. at		\$	
	Red'g	{ Coupl'gs	to in. at	\$	
	Inc'g	{			
	Union	in. at		\$	
	Meter	in. at		\$	
	Lead Joints	at		\$	
	Compound Joints	at		\$	
	Hrs. Water Maint. Man-1	at		\$	
2	Hrs. Water Maint. Man-2	at 1.02		\$	2.04
1	Hrs. Labor	at 91		\$	91
	Hrs. Labor	at		\$	
	Hrs. Compressor	at		\$	
	Compensation Ins. at \$ 2.18	per C.		\$	1.06
	Trucking			\$	2.00
	Pav't Patch			\$	10.25
	Tap by McGuinn			\$	
	O'head			\$	
				\$	29.95

126

St. Pt. Ave. No. 1

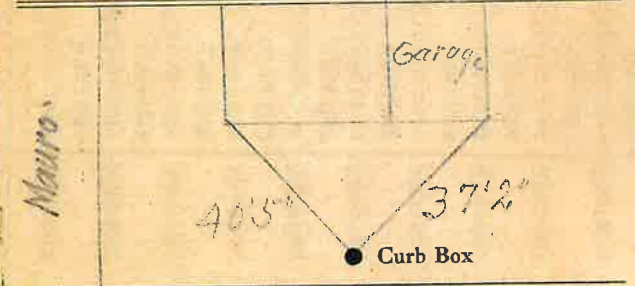
Mauro on Sanford

Name of Owner

Johnson

Labor and Mat'l. Report

Nov 15 1909



6 Main

Sanford

Elev. of Main at tap 4 1/2

Gate at ● Gate at ●

● Curb Box

This Tap on Sanford St.

Tax map # 303.9-7-32