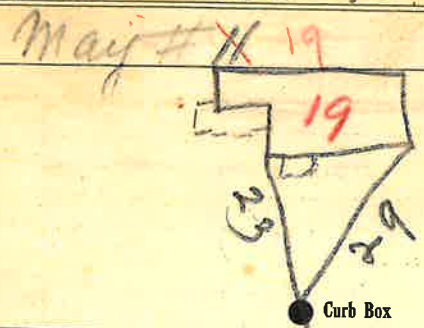


Labor and Materials

| | | | | | |
|----|-----------------------|-----------------------------|--------------------|----------|------|
| 1 | Copper | Connection | 3/4 | \$ | 96 |
| 1 | Lead | | | | |
| 1 | Curb | Cock Valve T.S.&V. | 3/4 in | \$ | 1.33 |
| 1 | Service Box | Short 3 1/2 x 4 1/2 | | \$ | 35 |
| | Old returned | Long 4 1/2 x 5 1/2 | | \$ | |
| | | Buff. or Bldg. | | \$ | |
| 23 | Ft. | Copper Galv. Iron Cast Iron | 3/4 in. Pipe at 15 | \$ | 2.70 |
| | Nipples | | in. at | \$ | |
| | Bushings | | to in. at | \$ | |
| | Red'g Inc'g | Couplings | to in. at | \$ | |
| | Union | | in. at | \$ | |
| | Meter | | in. at | \$ | |
| | Lbs. Br. Stone | | at | \$ | |
| | Lbs. Sand | | at | \$ | |
| | Bags Cement | | at | \$ | |
| | Paving Brick | Mack Red Asphalt | at | \$ | |
| | Lead Joints | | at | \$ | |
| | Leadite Joints | | at | \$ | |
| | Hrs. Foreman | | at | \$ | |
| | Hrs. Common Labor | | at | \$ | |
| | Hrs. Mason | | at | \$ | |
| | Hrs. Masons Helper | | at | \$ | |
| | Hrs. Compressor | | at | \$ | |
| | Compensation Ins | | | \$ | |
| | Trucking | | | \$ | |
| | Builders Use of Water | | | \$ | |
| | | | | Total \$ | |

125 19
Labor and Material Report 9-25-1936



8" 1976
4" Main
Elev. of Main at tap 5
Gate at ● Gate at ●

● Curb Box
Old tap Disc.
Tax Map # 302.20-18-7