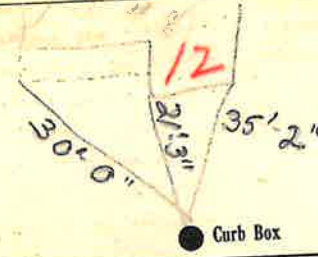


Labor and Materials

1	Copper	Connection	3/4	\$	1.48
1	Lead			\$	
1	Curb	Cock Valve T.S.&V.	3/4 in	\$	1.79
1	Service Box	Short 3 1/2 x 4 1/2		\$	1.30
	Old returned	Long 4 1/2 x 5 1/2		\$	
		Brill. or Rdway		\$	
6	Ft. 3/4 in.	Copper Pipe at		\$	1.62
		Cast Iron		\$	
		Cast Iron		\$	
	Nipples	in. at		\$	
	Bushings	to in. at		\$	
	Red'g Inc'g	Couplings to in. at		\$	
	Union	in. at		\$	
	Meter	in. at		\$	
	Lbs. Br. Stone	at		\$	
	Lbs. Sand	at		\$	
	Bags Cement	at		\$	
	Paving Brick	Mack Red Asphalt at		\$	
	Lead Joints	at		\$	
	Leadite Joints	at		\$	
6	Hrs. Foreman	at		\$	3.75
11	Hrs. Common Labor	at		\$	4.95
	Hrs. Common Labor	at		\$	
	Hrs. Mason	at		\$	
	Hrs. Masons Helper	at		\$	
	Hrs. Compressor	at		\$	
	Compensation Ins			\$	37
	Trucking			\$	1
	Builders Use of Water	Patch		\$	5-
				Total	\$ 21.16

532-135.12
 Labor and Material Report Nov 14 1932

8 May St



8"-1976
 Main

Elev. of Main at tap 4 1/2

Gate at ● Gate at ●

● Curb Box

old Tap not shut off

Tax Map # 302.20-9-28

OK JHB