

Labor and Materials

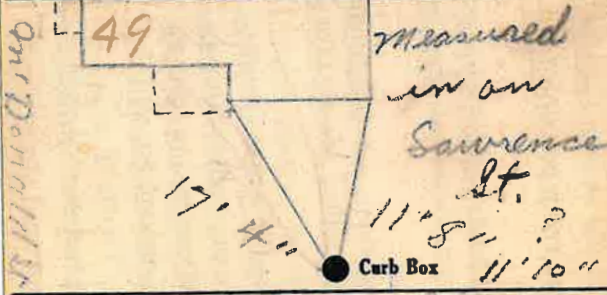
Copper	Connection	3	✓	\$ 1.46	
Lead					
Curb	Cock Valve	3	✓	\$ 1.93	
					P. S. & V.
Service Box Old returned	Short	3½ x 4½	}	\$ 1.77	
	Long	4½ x 5½			
	Buff. or Rdway				
9 Ft. in.	Copper	Pipe at	3	\$ 1.98	
					Galv Iron
					Cast Iron
Nipples	in. at			\$	
Bushings	to	in. at		\$	
Red's Inc's	Conplings	to	in. at	\$	
				\$	
Union	in. at			\$	
Meter	in. at			\$	
Lead Joints	at			\$	
Leadite Joints	at			\$	
Hrs. Foreman	at			\$	
2 Hrs. Chauffeur	at	6.25		\$ 1.25	
6 Hrs. Tapper	at	6.25		\$ 3.75	
7 Hrs. Labor	at	45		\$ 3.15	
Hrs. Labor	at			\$	
Hrs. Compressor	at			\$	
Compensation Ins.				\$ 25	
Trucking				\$ 1.00	
Builders Use of Water	Patch - (C)			\$ 10.00	
Trip by Council				\$	
				\$ 26.54	

163-1937

St. 44
Pl. 35
Ave. No.

Name of Owner *McDonald St. Daley*

Labor and Mat'l. Report *now* 9 19 37



12 Main Iron Main Elev. of Main at tap 4½

Gate at • TAX ID # 303.18-1-11 • Gate at

● Curb Box

Old taps disconnected on McDonald St. by us this date.