

Labor and Materials

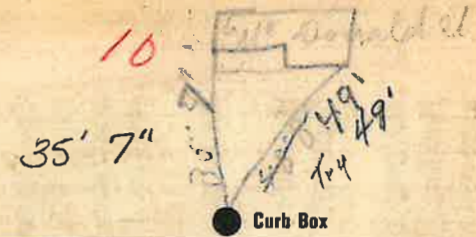
1	Copper } Connection	3/4"	\$ 3.20
	Lead }		
1	Curb { Cock Valve } T-S. & V. }	3/4" in.	\$ 1.00
1	Service Box { Short 3 1/2 x 4 1/2 } Old returned { Long 4 1/2 x 5 1/2 } Buff. or Rdway }		\$ 1.40
39	Ft. 3/4 in. { Copper } Galv. Iron } Pipe at		\$ 8.80
	Cast Iron }		
	Nipples	in. at	\$
1	Bushings	3/4" to 1/2" in. at	\$.08
1	Red'g } Couplings	1/2" to 1/2" in. at	\$.15
	Inc'g }		
	Union	in. at	\$
	Meter	in. at	\$
	Lbs. Br. Stone at		\$
	Lbs. Sand at		\$
	Bags Cement at		\$
	Paving Brick { Mack } Red } at		\$
	Asphalt }		
	Lead Joints at		\$
	Leadite Joints at		\$
15	Hrs. Foreman at	62.5	\$ 9.38
24	Hrs. Common Labor at	50	\$ 7.00
24	Hrs. Common Labor at	40.5	\$ 9.25
	Hrs. Mason at		\$
	Hrs. Mason's Helper at		\$
	Hrs. Compressor at		\$
	Compensation Ins.		\$.53
	Trucking		\$ 1.00
	Builders' Use of Water		\$
Total \$			47.32

26-13d 10

Labor and Material Report

19

3/4" Tap at 6 MC Road at



● Curb Box

8" - 1958

Main

Elev. of Main at tap

Gate at ●

● Gate at

● Curb Box

TAX ID # 303.18-11-2