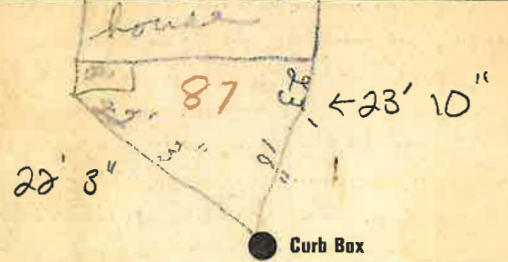


Labor and Materials

1	Copper	Connection	320	\$ 3.20
1	Curb	{ Cock Valve T. S. & V. }	in.	\$ 1.00
1	Service Box	{ Short 3 1/2 x 4 1/2 Long 4 1/2 x 5 1/2 Buff. or Rdway }		\$ 1.30
25	Ft.	5/8 in. Copper Galv. Iron Cast Iron	Pipe at	\$ 5.50
	Nipples	in. at		\$
	Bushings	to in. at		\$
1	Red'g In'g	Couplings	to in. at	\$ 1.25
	Union	in. at		\$
	Meter	in. at		\$
	Lbs. Br. Stone	at		\$
	Lbs. Sand	at		\$
	Bags Cement	at		\$
	Paving Brick	{ Mack Red Asphalt }	at	\$
	Lead Joints	at		\$
	Leadite Joints	at		\$
4	Hrs. Foreman	at	62.5	\$ 2.50
28	Hrs. Common Labor	at	41.75	\$ 11.35
	Hrs. Common Labor	at		\$
	Hrs. Mason	at		\$
	Hrs. Mason's Helper	at		\$
	Hrs. Compressor	at		\$
	Compensation Ins.		37	\$ 3.70
	Trucking		62.0	\$ 6.20
	Builders' Use of Water			\$
Total				\$ 262.7

77-146 87
 Labor and Material Report Aug 30 1927

no 75 Ave. Donald St



8" 19 1/2"

X Main Elev. of Main at tap 5

Gate at TAX ID # 303.14-2-18 Gate at

● Curb Box

Old lot to be dug up