

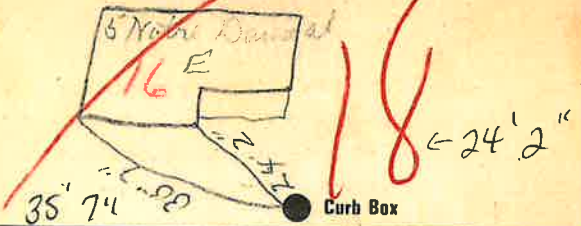
Labor and Materials

1	Copper } Connection $3/4$	\$ 2.70
	Lead	
1	Curb } Cock Valve } $3/4$ in.	\$ 2.39
	T.S. & V.	
1	Service Box } Short $3/4 \times 4 1/2$	\$ 1.45
	Old returned } Long $4 1/2 \times 5 1/2$	
		Buff. or Rdway
1.9	Ft. $3/4$ in. } Copper Galv. Iron } Pipe at	\$ 5.13
		Cast-Iron
	Nipples.....in. at.....	\$
	Bushings.....to.....in. at.....	\$
	Red'g } Couplings.....to.....in. at.....	\$
	Inc'g }	
	Union.....in. at.....	\$
	Meter.....in. at.....	\$
	Lbs. Br. Stone at.....	\$
	Lbs. Sand at.....	\$
	Bags Cement at.....	\$
	Paving Brick } Mack } at.....	\$
		Red
		Asphalt
	Lead Joints at.....	\$
	Leadite Joints at.....	\$
8	Hrs. Foreman at.....	\$ 5.-
10	Hrs. Common Labor at.....	\$ 4.50
	Hrs. Common Labor at.....	\$
	Hrs. Mason at.....	\$
	Hrs. Mason's Helper at.....	\$
	Hrs. Compressor at.....	\$
	Compensation Ins.....	\$.79
	Trucking.....	\$ 1.-
	Builders' Use of Water <i>Patch</i>	\$ 25.-
	Total \$	49.46

30-16 16
Labor and Material Report

1930

Apr 9
3/4" tap at 5' below Down at



6 Main

Elev of Main at tap *5ft*

Gate at ●

● Gate at

● Curb Box

Old tap shut off