

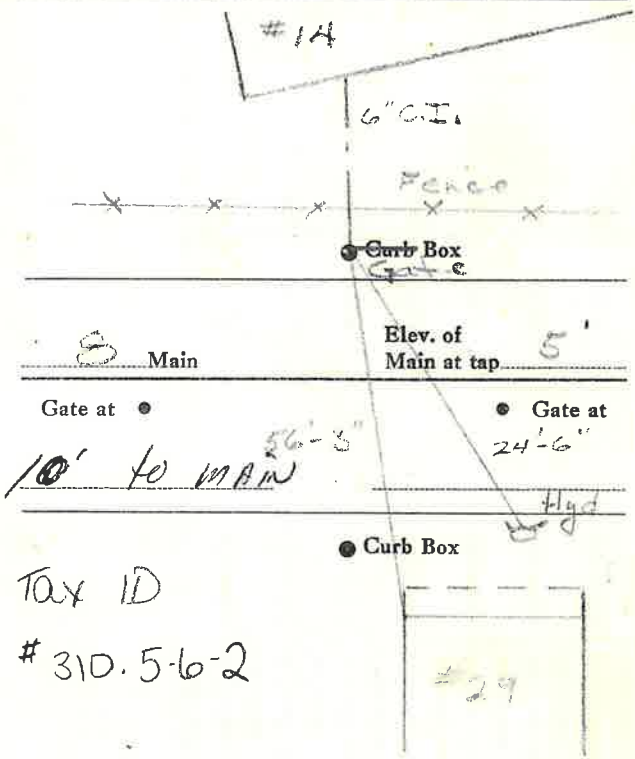
LABOR AND MATERIALS

Copper } Connection	6" T&V	\$
Lead } }		
Curb } Cock	6 in. Valve	\$
Valve		
T.S. & V.		
Service box	{ Short 3 1/2 x 4 1/2 Long 4 1/2 x 5 1/2 Buff or Rdway }	\$
Old returned		
10 Ft. 6 in.	{ Copper C.I. C. I. }	Pipe at 6" \$
Nipples	in. at	\$
Bushings	to in. at	\$
Red'g } Coupl'gs	to in. at	\$
Inc'g }		
Union	in. at	\$
Meter	in. at	\$
Lead Joints	at	\$
Compound Joints	at	\$
Maintenance Foreman		\$
Hrs. Water Maint. Man-1	at	\$
Hrs. Water Maint. Man-2	at	\$
Hrs. Garage Foreman	at	\$
Hrs. Labor	at	\$
Hrs. Compressor	at	\$
Compensation Ins.	at \$ per C	\$
Trucking		\$
Pav't Patch		\$
Tap	Oct 1976	\$
O'head		\$

Mohican St. ~~Pl~~ No. 14

Name of Owner  
Niagara Mohawk

Labor and Mat'l. Report Out 1976



Tax ID  
# 310.5-6-2