

LABOR AND MATERIALS

1	Copper	} Connection	3/4"	\$
	Lead			
1	Curb	} 3/4 in. Oriseal	\$	
	Cock			
	Valve T.S. & V.			
1	Service box	} Short 3 1/2 x 4 1/2	\$	
	Old returned			Long 4 1/2 x 5 1/2
		Buff or Rdway		
25	Ft. 3/4 in.	} Pipe at	\$	
				Copper
				G.I.
		C.I.		
	Nipples	in. at	\$	
	Bushings	to in. at	\$	
	Red'g.	} Coupl'gs	to in. at \$	
	Inc'g			
	Union	in. at	\$	
	Meter	in. at	\$	
	Lead Joints	at	\$	
	Compound Joints	at	\$	
	Maintenance Foreman		\$	
	Hrs. Water Maint. Man	-1 at	\$	
	Hrs. Water Maint. Man	-2 at	\$	
	Hrs. Garage Foreman	at	\$	
	Hrs. Labor	at	\$	
	Hrs. Compressor	at	\$	
	Compensation Ins.	at \$ per C	\$	
	Trucking		\$	
	Pav't Patch		\$	
	Tap by Lareau + Co.		\$	
		8-21-65.	\$	
	O'head		\$	

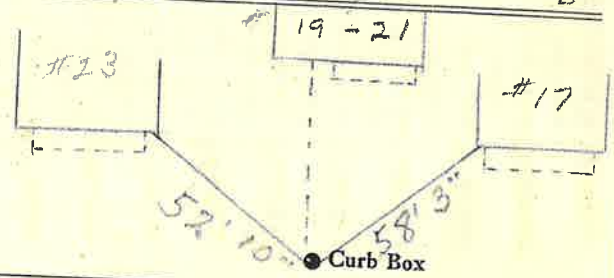
Mohican

St. Pl. Ave. No. 19-21

Name of Owner

Creedon

Labor and Mat'l. Report Aug 21 1965



4" Main

Elev. of Main at tap 6'

Gate at ●

● Gate at

● Curb Box

This Tap is for #19-21
Mohican St.
Curb box inside of
side walk.