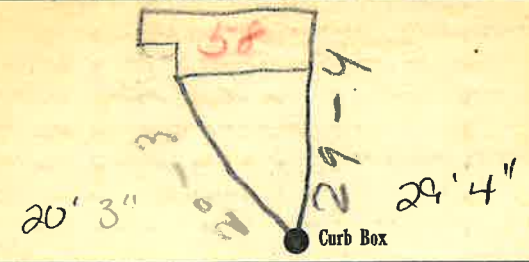


Labor and Materials

Copper	} Connection.....	\$. 1.50
Lead		
1 Curb	} Cock Valve T.S.&V. in \$ 1.70
1 Service Box		
Old returned	} Short 3 1/2 x 4 1/2 Long 4 1/2 x 6 1/2 Buff or Rdway \$ 1.44
19 Ft. 3/4 in.		
	} Copper Galv. Iron Cast Iron	} Pipe at \$ 3.61
Nipples		
Bushings to in. at..... \$.....	
Red'g Inc'g	} Couplings..... to..... in. at..... \$.....	
Union		
Meter in. at \$.....	
Lbs. Br. Stone	at \$.....	
Lbs. Sand	at \$.....	
Bags Cement	at \$.....	
Paving Brick	} Mack Red Asphalt	} at \$.....
Lead Joints		
Leadite Joints		
3 Hrs. Foreman	at 6 1/2 \$ 1.88	
4 Hrs. Common Labor	at 50 \$ 2.00	
8 Hrs. Common Labor	at 45 \$ 3.60	
Hrs. Mason	at \$.....	
Hrs. Masons Helper	at \$.....	
Hrs. Compressor	at \$.....	
Compensation Ins \$ 0.77	
Trucking \$ 1.00	
Builders Use of Water	Pave Patch \$ 2.50	
Total \$		19.50

20 34 58
Labor and Material Report *May 18* 19³⁴

34 *Michigan St*



4 Main Elev. of Main at tap 5
Gate at ● Gate at ●

● Curb Box
Shut off at main

Tax ID# 309,36-3-8

1/2