

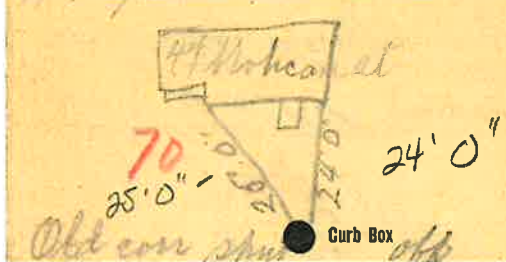
### Labor and Materials

Lead Connection	3/4	\$
Curb Cock	3/4	\$
Service Box	Short 3' x 4'	\$
Old returned	Long 4' x 5'	\$
	Buffalo	\$
20 Ft.	in. G. I. Pipe at	\$
	copper	\$
Nipples	in. at	\$
Bushings	to in. at	\$
Red'g Coup	to in. at	\$
Inc'g Coup	to in. at	\$
Union	in. at	\$
Meter	in. at	\$
Cu. Yds. Br. Stone	at	\$
Cu. Yds. Sand	at	\$
Bags Cement	at	\$
Paving Brick	{ Mack Red Asphalt } at	\$
4 Hrs. Foreman	at	\$
9 Hrs. Common Labor	at	\$
Hrs. Mason	at	\$
Hrs.	at	\$
Hrs.	at	\$
80 Builders' Use of Water	at	\$
Truck	1.00	at \$
	at	\$
	at	\$
	at	\$
Total	\$	15.72

### Labor and Material Report

1925

70  
See tap at 44 Mohican st



Main Elev. of Main at tap 5 ft  
Gate at ● 20' to main ● Gate at

● Curb Box  
Tax ID# 309.36-3.13