

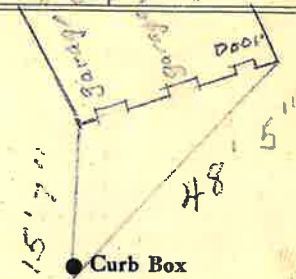
LABOR AND MATERIALS

1 Copper } Connection  $\frac{3}{4}$ " \$ \_\_\_\_\_  
 Lead }  
 1 Curb } Cock }  $\frac{3}{4}$  in. \$ \_\_\_\_\_  
 Valve }  
 T.S. & V. }  
 1 Service box } Short  $3\frac{1}{2} \times 4\frac{1}{2}$  }  
 Old returned } Long  $4\frac{1}{2} \times 5\frac{1}{2}$  } \$ \_\_\_\_\_  
 Buff or Rdway }  
 12 Ft  $\frac{3}{4}$  in. } Copper } Pipe at \$ \_\_\_\_\_  
 } G.I. }  
 } G.I. }  
 Nipples in. at \$ \_\_\_\_\_  
 Bushings to in. at \$ \_\_\_\_\_  
 Red'g }  
 Inc'g } Coupl'gs to in. at \$ \_\_\_\_\_  
 Union in. at \$ \_\_\_\_\_  
 Meter in. at \$ \_\_\_\_\_  
 Lead Joints at \$ \_\_\_\_\_  
 Compound Joints at \$ \_\_\_\_\_  
 Maintenance Foreman \$ \_\_\_\_\_  
 Hrs. Water Maint. Man-1 at \$ \_\_\_\_\_  
 Hrs. Water Maint. Man-2 at \$ \_\_\_\_\_  
 Hrs. Garage Foreman at \$ \_\_\_\_\_  
 Hrs. Labor at \$ \_\_\_\_\_  
 Hrs. Compressor at \$ \_\_\_\_\_  
 Compensation Ins. at \$ \_\_\_\_\_ per C \$ \_\_\_\_\_  
 Trucking \$ \_\_\_\_\_  
 Pav't Patch \$ \_\_\_\_\_

Used on their side \$ \_\_\_\_\_  
 O'head  $\frac{1}{2}$ " nipple \$ \_\_\_\_\_  
 1 -  $\frac{3}{4}$ " x  $2\frac{1}{2}$ " Long Galv. Coupling \$ \_\_\_\_\_  
 1 - 1" x  $\frac{3}{4}$ " Brass Reduc'g \$ \_\_\_\_\_  
 1 - 1" x  $3\frac{1}{2}$ " Long Galv Nipple \$ \_\_\_\_\_  
 1 - 1" x 6" Long Dresser Repair Steer \$ \_\_\_\_\_

177 Mohican St. Ave. No. 9  
 Name of Owner Fitzgerald Bros. Brewing Co.

Labor and Mat'l. Report Nov. 3 1960



4" Main Elev. of Main at tap  $5\frac{1}{2}$ '  
 Gate at • Gate at

• Curb Box

Buried UNDER Cement