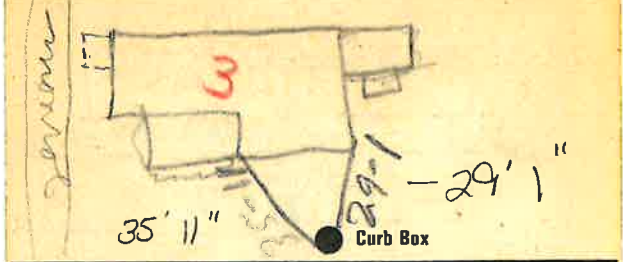


Labor and Materials

1	Copper	Connection	\$ 3.70
1	Lead		
1	Curb	{ Cock Valve T. S. & V. } in.	\$ 1.00
1	Service Box	{ Short 3 1/2 x 4 1/2 } { Bone 4 1/2 x 5 1/2 } { Rivt. or Rdway }	\$ 1.30
2	1 Ft. in. { Copper Galv. Iron Cast Iron } Pipe at	\$ 4.62
	Nipples in. at	\$
	Bushings to in. at	\$
	Red'g	{ Couplings to in. at	\$
	Inc'g		\$
	Union in. at	\$
	Meter in. at	\$
	Lbs. Br. Stone	at	\$
	Lbs. Sand	at	\$
	Bags Cement	at	\$
	Paving Brick	{ Mack Red Asphalt }	at	\$
	Lead Joints	at	\$
	Leadite Joints	at	\$
3	Hrs. Foreman	at	\$ 1.88
15	Hrs. Common Labor	at	\$ 6.09
	Hrs. Common Labor	at	\$
	Hrs. Mason	at	\$
	Hrs. Mason's Helper	at	\$
1	Hrs. Compressor	at	\$ 3.00
	Compensation Ins		\$.21
	Trucking		\$ 1.00
	Builders' Use of Water		\$
Total \$				22.30

28-94 3
 Labor and Material Report Aug 11 1928

10 Monroe St



6 Main Elev of Main at tap 4 1/2

Gate at ● Gate at ●

● Curb Box

Old job sheet off
 Tap on Sanford
 Tax ID # 302.16-10-5