

Labor and Materials

1	Copper	} Connection.. 3/4"	\$. 1.25
1	Lead		
1	Curb	} 3/4 in	\$. 1.70
	Cock Valve T.S.&V.		
	Service Box	} Short 3 1/2 x 4 1/2 Long 4 1/2 x 5 1/2	\$.
	Old returned		
24	Ft. tn.	} Pipe at 1 3/4	\$. 2.74
	Nipples	in. at	\$.
1	Bushings	3/4 to 1/2 in. at	\$. 05
	Red'g Inc'g	} Couplings.....to.....in.at	\$.
	Union.....in. at		\$.
	Meter.....in. at		\$.
	Lbs. Br. Stone at		\$.
	Lbs. Sand at		\$.
	Bags Cement at		\$.
	Paving Brick	} Mack Red Asphalt	} at
	Lead Joints at		
	Leadite Joints at		\$.
5 1/2	Hrs. Foreman at	6 1/2	\$. 3.44
7 1/2	Hrs. Common Labor at	50	\$. 1.75
7 1/2	Hrs. Common Labor at	45	\$. 1.73
	Hrs. Mason at		\$.
	Hrs. Masons Helper at		\$.
	Hrs. Compressor at		\$.
	Compensation Ins		\$. 54
	Trucking		\$. 1.00
	Builders Use of Water		\$.

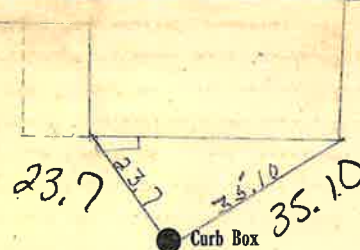
Total \$ 22.71

1935-68

Labor and Material Report Aug 24

1935

3/4 tap at 410 Mon Deal in 54.



10" Main

Elev of Main at tap 5 1/2

Gate at ●

● Gate at

● Curb Box

Tax ID # 309.27-6-42

old blind off at main

110