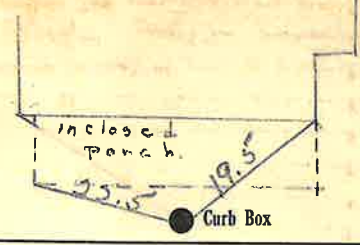


Labor and Materials

1..Copper } Connection <sup>3/4"</sup> .....	\$ 1.25
1..Lead } .....	
1..Curb { Cock Valve } <sup>3/4</sup> in .....	\$ 1.70
1..T.S.&V. } .....	
1..Service Box { Short 3 1/2 x 4 1/2 } .....	\$ 1.37
Old returned { Long 4 1/2 x 5 1/2 } .....	
Buff. or Rdway. } .....	
12..Ft.....in. { Copper } Pipe at <sup>13 1/2</sup> .....	\$ 1.67
Galv. Iron } .....	
Cast Iron } .....	
Nipples .....in. at .....	\$ .....
1..Bushings <sup>3/4</sup> to <sup>1 1/2</sup> in. at .....	\$ .55
Red'g } Couplings.....to.....in.at....	\$ .....
Inc'g } .....	
Union.....in. at .....	\$ .....
Meter.....in. at .....	\$ .....
Lbs. Br. Stone at .....	\$ .....
Lbs. Sand at .....	\$ .....
Bags Cement at .....	\$ .....
Paving Brick { Mack } at .....	\$ .....
Red } .....	
Asphalt } .....	
Lead Joints at .....	\$ .....
Leadite Joints at .....	\$ .....
7..Hrs. Foreman at ..... <sup>6 1/2</sup> .....	\$ 1.25
1..Hrs. Common Labor at .....	\$ .50
6 1/2..Hrs. Common Labor at <sup>45</sup> .....	\$ 7.93
Hrs. Mason at .....	\$ .....
Hrs. Masons Helper at .....	\$ .....
Hrs. Compressor at .....	\$ .....
Compensation Ins .....	\$ .18
Trucking .....	\$ 1.-
Builders Use of Water .....	\$ .....
Total \$ 11.85	

3/4" Tap at 67 Mont Co In



6" Main Elev. of Main at tap 5

Gate at ● Gate at ●

● Curb Box

*old shut off at main*

*MA*

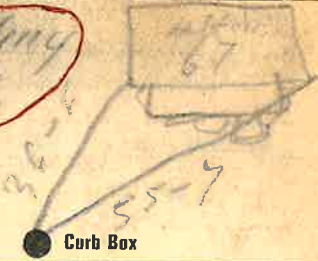
Tax ID # 309.7-11-19

**Labor and Materials**

Copper } Connection	2	\$ 2.60
Lead } Connection	2	
Curb } Cock Valve	1	\$ 2.27
} T. S. & V.	1	
Service Box } Short 3 1/2 x 4 1/2	4	\$ 1.38
Old returned } Long 4 1/2 x 5 1/2		
} Built or Rdway		
9 Ft. .... in. } Copper	2	\$ 1.62
} Galv. Iron	2	
} Cast Iron	4	
} Pipe at		
Nipples .. in. at		\$
Bushings .. to .. in. at		\$
Red'g } Couplings .. to .. in. at		\$
Inc'g } Couplings		\$
Union .. in. at		\$
Meter .. in. at		\$
Lbs. Br. Stone at		\$
Lbs. Sand at		\$
Bags Cement at		\$
Paving Brick } Mack		\$
} Red		\$
} Asphalt		\$
Lead Joints at		\$
Leadite Joints at		\$
2 Hrs. Foreman at		\$ 1.25
8 Hrs. Common Labor at		\$ 3.60
Hrs. Common Labor at		\$
Hrs. Mason at		\$
Hrs. Mason's Helper at		\$
Hrs. Compressor at		\$
Compensation Ins		\$ 15
Trucking		\$ 1 -
Builders' Use of Water		\$ 5 -
Total \$		18.87

67 Mont Calm

Tap for Bottling Works # 69.



6 Main Eley of Main at tap 52

Gate at ● Gate at ●

● Curb Box

Tax ID # 309.7-11-19

## LABOR AND MATERIALS

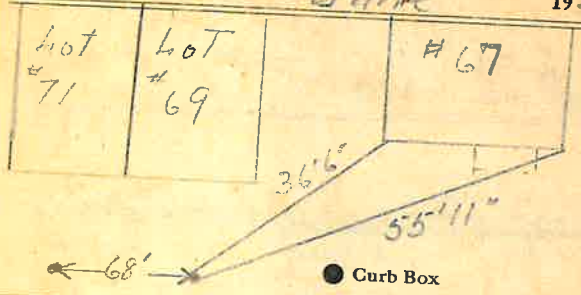
Copper	}	Connection			\$	
Lead						
Curb	{	Clock Valve T. S. & V.		in.	\$	
Service box			{	Short 3 1/2 X 4 1/2 Long 4 1/2 X 5 1/2 Buff or Rdway		
Old returned						
Ft.	}	Copper Galv. Iron Cast Iron		in.	\$	
in.			Pipe at			
Nipples				in. at	\$	
Bushings				in. at	\$	
Red'g Inc'g	}	Couplings		to	in. at	
						\$
Union				in. at	\$	
Meter				in. at	\$	
Lead Joints					\$	
Compound Joints					\$	
Hrs. Foreman					\$	
Hrs. Chauffeur					\$	
Hrs. Tapper					\$	
Hrs. Labor					\$	
Hrs. Labor					\$	
Hrs. Compressor					\$	
Compensation Ins.					\$	
Trucking					\$	
Builders Use of Water					\$	
<i>Measured by Maesins...</i>					\$	
<i>1.600</i>					\$	
<i>These not Measured by...</i>					\$	
<i>#67 Montcalm ST.</i>					\$	

St. *Lot*  
Pr. *Lot*  
Ave. No. *69-71*

*Montcalm*

Name of Owner

Labor and Mat'l. Report *June* 19*45*



Main Elev. of Main at tap

Gate at ● Gate at ●

● Curb Box

#71  
Tax ID # 309.7-11-18  
#67-#69  
Tax ID # 309.7-11-19