

Labor and Materials

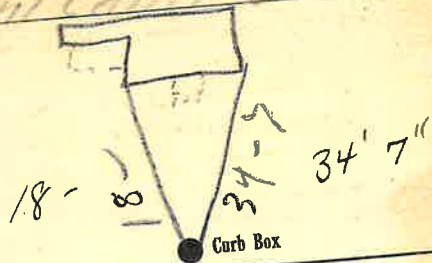
1. Lead } Copper Connection.....	3	\$1.50
1. Curb { Cock Valve T.S.&V. }	3	\$1.70
1. Service Box Old returned { Short 3 1/2 x 4 1/2 Long 4 1/2 x 5 1/2 }		\$1.50
25 Ft. 3/4 in. { Copper Galv. Iron Cast Iron } Pipe at		\$4.75
..... Nipples		\$
..... Bushings		\$
..... Red'g Inc'g } Couplings.....		\$
..... Union.....		\$
..... Meter.....		\$
..... Lbs. Br. Stone at		\$
..... Lbs. Sand at		\$
..... Bags Cement at		\$
..... Paving Brick { Mack Red Asphalt } at		\$
..... Lead Joints at		\$
..... Leadite Joints at		\$
4 Hrs. Foreman at	6.25	\$7.50
72 Hrs. Common Labor at	45	\$9.90
..... Hrs. Common Labor at		\$
..... Hrs. Mason at		\$
..... Hrs. Masons Helper at		\$
..... Hrs. Compressor at		\$
..... Compensation Ins		\$0.45
..... Trucking		\$2.-
..... Builders Use of Water <u>Part Patch</u>		\$5.-
Total		\$29.34

99 34

Labor and Material Report

Sept 25 1934

8 Mont Calm St.



10 Main Elev. of Main at tap 6
 Gate at ● Gate at ●

● Curb Box

old tap shut off
 main

Tax ID# 309.27-6-27

H/H

1/19