

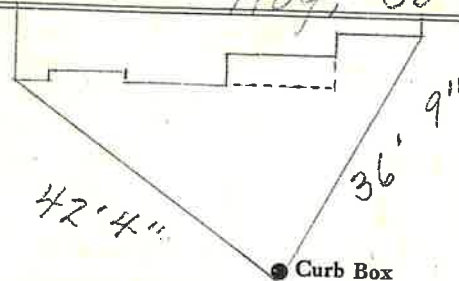
LABOR AND MATERIALS

1	Copper Lead	Connection	3/4"	\$
1	Curb	Cock Valve T.S. & V.	3/4 in.	\$
1	Service box	{ Short 3 1/2 x 4 1/2 Long 4 1/2 x 5 1/2 Buff or Rdway }		\$
	Old returned			
29	Ft.	Copper	Pipe at	\$
		C.I.		
		C.I.		
	Nipples	in.	at	\$
	Bushings	to	in. at	\$
	Red'g	Coupl'gs	to in. at	\$
	Inc'g			
	Union	in.	at	\$
	Meter	in.	at	\$
	Lead Joints	at		\$
	Compound Joints	at		\$
	Maintenance Foreman			\$
	Hrs. Water Maint. Man	1	at	\$
	Hrs. Water Maint. Man	2	at	\$
	Hrs. Garage Foreman		at	\$
	Hrs. Labor		at	\$
	Hrs. Compressor	at		\$
	Compensation Ins.	at \$	per C	\$
	Trucking			\$
	Pav't Patch			\$
	Tap by Giggord + Co.			\$
	8-30-63.			\$
	O'head			\$

Monument -Str-
-Pl-
Ave. No. 42

Name of Owner
Richard D. Humphrey

Labor and Mat'l. Report Aug, 30 1963



6" C.I. Main Elev. of Main at tap 5'

Gate at ● ● Gate at

● Curb Box

Tax ID # 302.11-8-1