

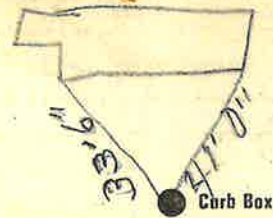
### Labor and Materials

1	Copper } Connection	3/4	\$ 3.20
	Lead } .....		
1	Curb } Cock Valve	3/4 in.	\$ 1.00
	F.S. & V. } .....		
1	Service Box } Short 3' x 4'		\$ 1.22
	Old returned } Long 4' x 5'		
		Buff. or Rdway	
11	Ft. 3/4 in. } Copper Galv. Iron } Pipe at		\$ 2.42
		Cast Iron	
	Nipples.....in. at.....		\$
	Bushings.....to.....in. at.....		\$
	Red'g } Couplings.....to.....in. at.....		\$
	Inc'g } .....		
	Union.....in. at.....		\$
	Meter.....in. at.....		\$
	Lbs. Br. Stone at.....		\$
	Lbs. Sand at.....		\$
	Bags Cement at.....		\$
	Paving Brick } Mack Red Asphalt } at.....		\$
	Lead Joints at.....		\$
	Leadite Joints at.....		\$
3	Hrs. Foreman at.....		\$ 4.88
1	Hrs. Common Labor at.....		\$ 20.3
	Hrs. Common Labor at.....		\$
	Hrs. Mason at.....		\$
	Hrs. Mason's Helper at.....		\$
	Hrs. Compressor at.....		\$
	Compensation Ins.....		\$ 10
	Trucking.....		\$ 100
	Builders' Use of Water.....		\$
Total \$			179.3

Labor and Material Report

Sept 25 1928

27 Monument



6" Main

Elev. of Main at tap 3/2

Gate at ●

● Gate at

● Curb Box

Tax 10# 302.11-7-24