

Labor and Materials

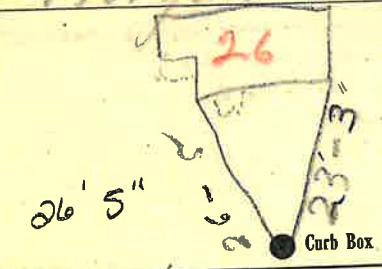
1	Copper	Connection	\$ 1.50
1	Lead			
7	Curb	Cock Valve G.S. & V. } in	\$ 1.70
1	Service Box	Short 3 1/2 x 4 1/2 } Long 4 1/2 x 5 1/2 } Old returned with hardware	\$ 1.50
7	Ft.	Copper Galv. Iron Cast Iron } Pipe at	\$ 1.33
		Nipples in. at	\$
		Bushings to in. at	\$
		Red'g Inc'g } Couplings to in. at	\$
		Union in. at	\$
		Meter in. at	\$
		Lbs. Br. Stone	at	\$
		Lbs. Sand	at	\$
		Bags Cement	at	\$
		Paving Brick	Mack Red Asphalt } at	\$
		Lead Joints	at	\$
		Leadite Joints	at	\$
9	Hrs.	Foreman	at 62 1/2	\$ 5.63
24	Hrs.	Common Labor	at 45	\$ 10.80
		Hrs. Common Labor	at	\$
		Hrs. Mason	at	\$
		Hrs. Masons Helper	at	\$
		Hrs. Compressor	at	\$
		Compensation Ins		\$ 0.59
		Trucking		\$ 2.-
		Builders Use of Water	Pool Patch	\$ 5.-

Total \$ 30.09

65 34 26

Labor and Material Report Aug 8 1939

20 Morgan



To Fireman

12 Main Elev. of Main at tap 4 1/2

Gate at TAX ID# 303.13-23-28 Gate at

● Curb Box

old shut off at main
to be changed leak
in old service pipes
could not be repaired
made new taps.

1/2