

1. 3/4" Curb Stop - MARK II
 LABOR AND MATERIALS
 FOR Bldg.

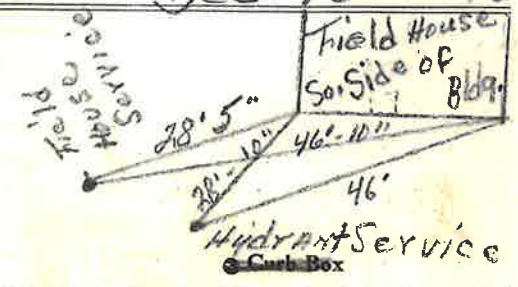
- 1 Copper } Connection 1 1/2" \$
- Lead } \$
- 1 Curb } Cock } 1 1/2" in. OYISE#1 \$
- Valve } \$
- 2 Service box } Short 3 1/2 x 4 1/2 } Bldg Tap \$
- Old returned } Long 4 1/2 x 5 1/2 } 4'-5' OYISE#1 \$
- Buff or Rdway } \$
- 49 Ft. 1 1/2 in. } Copper } Pipe at \$
- Gal. } 2-20' lengths \$
- Gal. } \$
- Nipples in. at 1-7' \$
- 1 Bushings 1 1/2 to 3/4 in. at \$
- Red'g } Coupl'gs to in. at \$
- In'g } \$
- Union in. at \$
- Meter in. at \$
- 2 Lead Joints at 3pc-1 1/2" Coupling \$
- Compound Joints at \$
- Maintenance Foreman \$
- Hrs. Water Maint. Man-1 at \$
- Hrs. Water Maint. Man-2 at \$
- Hrs. Garage Foreman at \$
- 1 Hrs. Labor - BRASS Tee-1 1/2" - 3/4" \$
- 1 Hrs. Compressor at 3/4" male Adapter \$
- Compensation Ins. at \$ per C \$
- 1 1/2" Trucking 3/4" K Copper \$
- Pav't Patch \$
- \$
- \$
- \$
- \$
- O'head \$
- \$

Tap By Beecher & Co
 12/13/73

St. Murray Ave. No. ?

Name of Owner Murray St. Playground

Labor and Mat'l. Report Dec. 13 1973



12" Main Elev. of Main at tap 5 1/2'

Gate at • Gate at •

TAX ID # 309.12-4-3

• Curb Box

Measured From South Side of Field House

Bldg

Sidewalk

Curb Stop

MURRAY ST

3/4" Service For Building

LABOR AND MATERIALS

Copper	} Connection	_____	\$ _____	
Lead				
Curb	} Cock } Valve } T. S. & V.	_____ in.	\$ _____	
Service box		} Short 3½ x 4½ } Long 4½ x 5½		
Old returned				\$ _____
Ft. _____ in.	} Copper } G. I. } C. I.	Pipe at _____	\$ _____	
Nipples _____ in.		at _____	\$ _____	
Bushings _____ to _____ in.		at _____	\$ _____	
Red'g } Inc'g }	} Coupl'gs.	_____ to _____ in.	at _____ \$ _____	
Union _____ in.		at _____	\$ _____	
Meter _____ in.	at _____	\$ _____		
_____			\$ _____	
Compound Joints	at _____	\$ _____		
Maintenance Foreman		\$ _____		
Hrs. Water Maint. Man—1	at _____	\$ _____		
Hrs. Water Maint. Man—2	at _____	\$ _____		
Hrs. Garage Foreman	at _____	\$ _____		
Hrs. Labor—	at _____	\$ _____		
Hrs. Compressor	at _____	\$ _____		
_____		\$ _____		
Trucking		\$ _____		
Pav't Patch		\$ _____		
_____		\$ _____		
_____		\$ _____		
_____		\$ _____		
_____		\$ _____		

PLAYGROUND

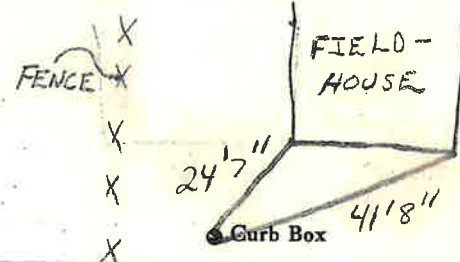
MURRAY

St. _____
Pt. _____
Ave. No. _____

Name of Owner _____

Labor and Mat'l. Report _____

19 _____



_____ Main Elev. of
Main at tap

Gate at ● ● Gate at

● Curb Box

FOR DRINKING FOUNTAIN