

LABOR AND MATERIALS

1	Copper Lead	Connection	3/4"	\$
1	Curb	Cock Valve P.S. & A.	3/4 in. (MURRAY ORIGINAL)	\$
1	Service box Old returned	Short 3 1/2 x 4 1/2		\$
3	Ft.	3/4 in.	Copper G.I. Pipe at	\$
	Nipples	in. at		\$
	Bushings	to in. at		\$
	Red'g Inc'g	Coupl'gs to in. at		\$
	Union	in. at		\$
	Meter	in. at		\$
	Lead Joints	at		\$
	Compound Joints	at		\$
	Maintenance Foreman			\$
	Hrs. Water Maint. Man-1	at		\$
	Hrs. Water Maint. Man-2	at		\$
	Hrs. Garage Foreman	at		\$
	Hrs. Labor	at		\$
	Hrs. Compressor	at		\$
	Compensation Ins.	at \$ per C.		\$
	Trucking			\$
	Pav't Patch			\$
	O'head			\$

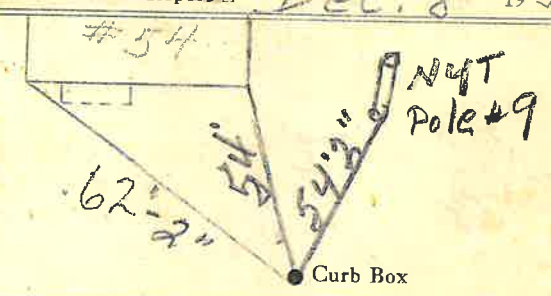
Measured in by Lareau + Wadleigh

TAP CHANGED OVER FROM OLD 8" MAIN TO NEW 12" MAIN BY GIFFORD & CO

DEC-3-1973

Empty Lot Tap for
MURRAY St. Pl. Ave. No. 54

Name of Owner
Measured in Labor and Mat'l. Report Dec. 8 1954



12" Main Elev. of Main at tap
Gate at Gate at
TAX ID # 309.12-11-3

This Lot Tap Measured from #54 Murray St. Short