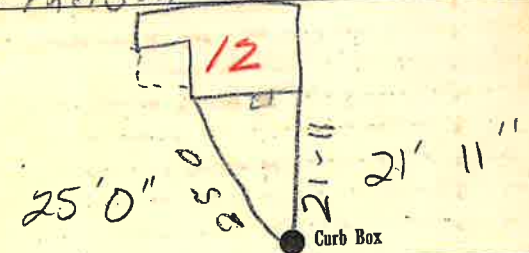


**Labor and Materials**

1	Copper	Connection.....	7	\$ 1.75
1	Curb	{ Cock Valve } .....	3/4	\$ 1.70
1	Service Box	{ Short 3/4 x 1 1/2 } .....		\$ 1.45
27	Old returned	{ Long 4 1/2 x 5 1/2 } .....		\$ 1.45
25	3/4 in.	{ Copper } Pipe at 13 1/2		\$ 3.38
		{ Cast Iron } .....		
	Nipples	..... in. at .....		\$
	Bushings	..... 1/2 to .....		\$
1	Red's	{ Couplings } .....		\$
		..... in. at .....		\$
	Union	..... in. at .....		\$
	Meter	..... in. at .....		\$
	Lbs. Br. Stone	at .....		\$
	Lbs. Sand	at .....		\$
	Bags Cement	at .....		\$
	Paving Brick	{ Mack } at .....		\$
		{ Red } .....		\$
		{ Asphalt } .....		\$
	Lead Joints	at .....		\$
	Leadite Joints	at .....		\$
5	Hrs. Foreman	at 6 1/2 hr		\$ 3.13
23	Hrs. Common Labor	at 15		\$ 12.75
	Hrs. Common Labor	at .....		\$
	Hrs. Mason	at .....		\$
	Hrs. Masons Helper	at .....		\$
	Hrs. Compressor	at .....		\$
	Compensation Ins	.....		\$ 51
	Trucking	.....		\$ 11
	Builders Use of Water	Patah		\$ 5
Total				\$ 77.76

1835-102 12  
 Labor and Material Report May 30 1935

8 Nelson St



6" Main Elev. of Main at tap 52  
 Gate at ● Gate at ●

● Curb Box  
 old sheet off at Main

TAX ID # 302.20-10-3