

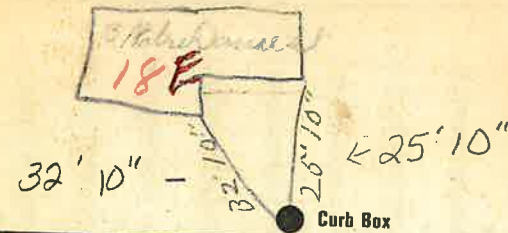
Labor and Materials

1	Copper	Connection	\$	2.60
1	Lead			
1	Curb	Cock Valve T.S. & V. 3/4 in.	\$	2.30
1	Service Box	Short 3/4 x 1/2	\$	1.40
	Old returned	Long 1/2 x 5/8 Buff. or Rdway		
20	Pt. 3/4 in.	Copper Galv. Iron Pipe at	\$	5.30
		Cast Iron		
	Nipples	in. at	\$	
	Bushings	to in. at	\$	
	Red'g Inc'g	Couplings to in. at	\$	
	Union	in. at	\$	
	Meter	in. at	\$	
	Lbs. Br. Stone	at	\$	
	Lbs. Sand	at	\$	
	Bags Cement	at	\$	
	Paving Brick	Mack Red Asphalt at	\$	
	Lead Joints	at	\$	
	Leadite Joints	at	\$	
16	Hrs. Foreman	at	\$	10.-
9	Hrs. Common Labor	at	\$	4.05
	Hrs. Common Labor	at	\$	
	Hrs. Mason	at	\$	
	Hrs. Mason's Helper	at	\$	
	Hrs. Compressor	at	\$	
	Compensation Ins.		\$	43
	Trucking		\$	1.-
	Builders' Use of Water	Patch	\$	25.-
Total			\$	57.08

Labor and Material Report

1930

3/4" tap at 3 water main at



6" Main Elev of Main at tap 5 ft

Gate at ● Gate at ●

● Curb Box

Old tap shut off

Tax 10 # 302.20 - 12-20