

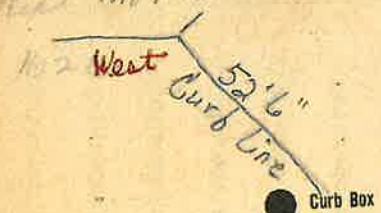
Labor and Materials

1	Lead Connection	12	\$
1	Curb Cock	30	\$
1	Service Box (Short 3 1/2 x 4 1/2)		\$
	Old returned (Long 4 1/2 x 5 1/2)		\$
6	Ft. in. G. I. Pipe at		\$
	Nipples in. at		\$
	Bushings to in. at		\$
	Red'g Coup to in. at		\$
	Inc'g Coup to in. at		\$
	Union in. at		\$
	Meter in. at		\$
	Cu. Yds. Br. Stone at		\$
	Cu. Yds. Sand at		\$
	Bags Cement at		\$
	Paving Brick { Mack Red Asphalt } at		\$
2	Hrs. Foreman at		\$
2	Hrs. Common Labor at		\$
	Hrs. Mason at		\$
	Hrs. at		\$
	Hrs. at		\$
	Builders' Use of Water		\$
	at		\$
	Truck 15.0		\$
	at		\$
	at		\$
	at		\$
	Total	9.67	\$

Labor and Material Report

1923

To top of vacant lot No 2  
Real note Notre Dame at



Main Gate at ● Elev. of Main at tap 412.4 ● Gate at

West  
Notre  
Dame