

LABOR AND MATERIALS

Copper } Connection \$
Lead }
Curb { Cock Valve } in \$
 { T. S. & V. }
Service Box } Short 3 1/2 x 4 1/2 }
Old returned } Long 4 1/2 x 5 1/2 } \$
 } Buff for Rdway }
Ft. in. } Copper } Pipe at \$
 } Galv Iron }
 } Cast Iron }

Nipples in. at \$
Bushings to in. at \$
Red'g } Couplings to in. at \$
Inc'g }

Union in. at \$
Meter in. at \$
Lead Joints at \$
Leadite Joints at \$
Hrs. Foreman at \$
Hrs. Chauffeur at \$
Hrs. Tapper at \$
Hrs. Labor at \$
Hrs. Labor at \$
Hrs. Compressor at \$
Compensation Ins. \$
Trucking \$
Builders Use of Water \$
..... \$
..... \$
..... \$
..... \$

St. 26th
Pt. Notre Dame
Ave. No. 30

Name of Owner _____

Labor and Mat'l. Report **AUG 24 1939** 19

41'-7"
42'-4"
Curb Box

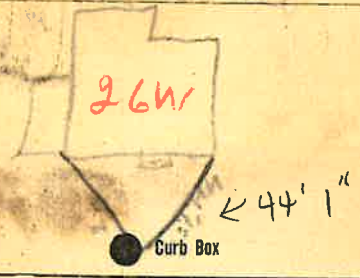
TAX ID # 302.20-14-6

..... Main Elev. of Main at tap.....
Gate at • Gate at •
.....
..... Curb Box

Labor and Materials

1	Lead Connection	\$
1	Curb Cock	\$
	Service Box (Short 31 x 31)	\$
	Old returned (Long 4 1/2 x 5 1/2)	\$
	Buffalo	\$
7	Ft. in. G.I. Pipe at <i>cap</i>	\$
	Nipples in. at	\$
1	Bushings 3/4 to 1 in. at	\$
	Red'g Coup to in. at	\$
	Inc'g Coup to in. at	\$
	Union in. at	\$
	Meter in. at	\$
400	Cu. Yds. Br. Stone at	\$
400	Cu. Yds. Sand at	\$
2	Bags Cement at	\$
40	Paving Brick (Mack Red-Asphalt) at	\$
2	Hrs. Foreman at	\$
7	Hrs. Common Labor at	\$
4	Hrs. Mason at	\$
4	Hrs. <i>Helper</i> at	\$
	Hrs. at	\$
90	Builders' Use of Water	\$
	at	\$
	<i>compressor 2 hr</i> at	\$
	<i>Truck</i> at	\$
	at	\$
	at	\$
	Total	\$	2845

30 Total Demand



4" Main Elev. of Main at tap 6'
 Gate at ● Gate at ●

● Curb Box