

Labor and Materials

1	Copper } Connection		\$ 3.20
	Lead } Connection		
1	Curb { Cock Valve } T.S. & V. } 2 1/2 in.		\$ 1.00
1	Service Box } Short 3 1/2 x 4 1/2 } Old returned } Long 4 1/2 x 5 1/2 } Buff. or Rdway }		\$ 1.30
25	Ft. 3/4 in. } Copper Galv. Iron } Cast Iron } Pipe at		\$ 5.50
	Nipples	in. at	\$
1	Bushings	to 1/2 in. at	\$.08
1	Red'g } Couplings } Inc'g }	to in. at	\$ 1.0
	Union	in. at	\$
	Meter	in. at	\$
	Lbs. Br. Stone at		\$
	Lbs. Sand at		\$
	Bags Cement at		\$
	Paving Brick { Mack Red Asphalt } at		\$
	Lead Joints at		\$
	Leadite Joints at		\$
9	Hrs. Foreman at	6 2/3	\$ 5.63
1	Hrs. Common Labor at	50	\$ 2.50
9	Hrs. Common Labor at	40 1/2	\$ 3.66
	Hrs. Mason at		\$
	Hrs. Mason's Helper at		\$
	Hrs. Compressor at		\$
	Compensation Ins.		\$ 31
	Trucking		\$ 1.00
	Builders' Use of Water		\$

Parmentis

Total \$ 24.28

27-183 ^{AN} 27W
 Labor and Material Report *et 11* 19 *27*

no 302.20-7-19



11" Main Elev. of Main at tap 5'
 Gate at ● ● Gate at

● Curb Box

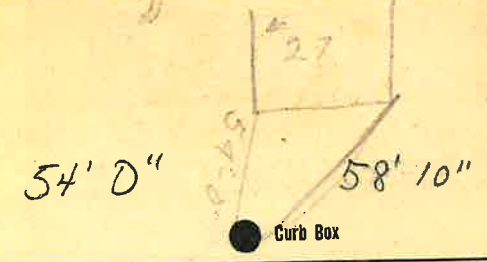
Old Tap Shot

Tax ID# 302.20-7-19

Labor and Materials

1	Lead Connection	\$
1	Curb Cock	\$
1	Service Box (Short 3 1/2 x 4 1/2)	\$
	Old returned (Long 4 1/2 x 5 1/2)	\$
	Buffalo	\$
2.5	Ft. 1/2 in. G. I. Pipe at	\$
	Nipples.....in. at	\$
	Bushings.....to.....in. at	\$
	Red'g Coup.....to.....in. at	\$
	Inc'g Coup.....to.....in. at	\$
	Union.....in. at	\$
	Meter.....in. at	\$
300	Cu. Yds. Br. Stone at	\$
2.00	Cu. Yds. Sand at	\$
1	Bags Cement at	\$
29	Paving Brick { Mack } at	\$
	{ Red } at	\$
	{ Asphalt }	\$
7	Hrs. Foreman at	\$
19 1/2	Hrs. Common Labor at	\$
2	Hrs. Mason at	\$
2	Hrs. Helper at	\$
	Hrs. at	\$
	Builders' Use of Water	\$
	Permit of W	at \$
	Trenching	at \$
	Three Tap to Basin	at \$
	Sanitary Feed	at \$
	Total	\$ 29.73

3. Top Run 07 8-12-24



1 Main Elev. of Main at tap 5'

Gate at ● Gate at ●

● Curb Box

Pavement