

LABOR AND MATERIALS

1	Copper Lead	Connection	3/4	\$	1.23
1	Curb	Cock Valve T. S. & V.	3/4 in.	\$	1.68
1	Service Box Old returned	Short 3 1/2 x 4 1/2 Long 4 1/2 x 5 1/2 Buff. or Rdway		\$	1.75
24	Ft.	3/4 in.	Copper Galv Iron Cast Iron	Pipe at	15 \$ 3.60
	Nipples	in. at		\$	
	Bushings	to in. at		\$	
	Red'g Inc'g	Couplings to in. at		\$	
	Union	in. at		\$	
	Meter	in. at		\$	
	Lead Joints	at		\$	
	Leadite Joints	at		\$	
	Hrs. Foreman	at		\$	
3	Hrs. Chauffeur	at	6 2 1/2	\$	1.87
5	Hrs. Tapper	at	7	\$	3.13
	Hrs. Labor	at		\$	
8	Hrs. Labor	at	45	\$	3.60
2	Hrs. Compressor	at	8 7/2	\$	1.75
	Compensation Ins.			\$	26
	Trucking			\$	1.00
	Builders Use of Water	Patch		\$	4.00
	Trophy Penon			\$	
				\$	
				\$	
				\$	
				\$	
				\$	58.87

50 - 1938

St. **35W**
Pt. **39**
Ave. No. **39**

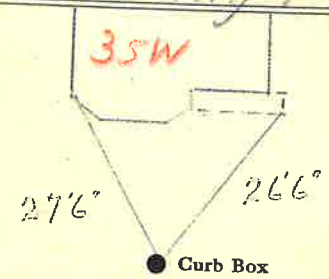
Notre Dame

Name of Owner

Squires

Labor and Mat'l. Report

Aug 9 1938



6 Main

Elev. of Main at tap **5**

Gate at ●

● Gate at

● Curb Box

Tax ID# 302.20-3-23

old Top dug up on Charlotte St + Shut off