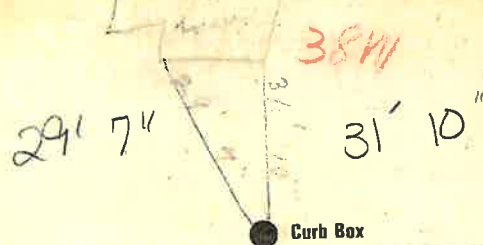


Labor and Materials

1	Copper } Connection 3/4	\$ 2.60	
	Lead		
	Curb } Cock Valve in.	\$ 2.30	
		T. S. & V.		
1	Service Box } Short 3 1/2 x 4 1/2	\$ 1.40	
	Old returned } Long 4 1/2 x 5 1/2		
		Buff. or Rdway		
6	Ft. } in. } Copper	\$ 1.59	
		Galv. Iron		
		Cast Iron		
	Nipples in. at	\$	
	Bushings to in. at	\$	
	Red'g } Couplings to in. at	\$	
	Inc'g }			
	Union in. at	\$	
	Meter in. at	\$	
	Lbs. Br. Stone	at	\$	
	Lbs. Sand	at	\$	
	Bags Cement	'at	\$	
	Paving Brick } Mack	} at	\$	
				Red
				Asphalt
	Lead Joints	at	\$	
	Leadite Joints	at	\$	
3	Hrs. Foreman	at	\$ 1.88	
11	Hrs. Common Labor	at	\$ 4.47	
	Hrs. Common Labor	at	\$	
	Hrs. Mason	at	\$	
	Hrs. Mason's Helper	at	\$	
2	Hrs. Compressor	at	\$ 3.00	
	Compensation Ins		\$.17	
	Trucking		\$ 1.00	
	Builders' Use of Water	Patch	\$ 25.00	
Total \$			43.41	

29-194 38W 11/11 1929
 Labor and Material Report

112 Meter Damage



6" Main Elev of Main at tap 5
 Gate at ● Gate at ●

● Curb Box
 all job shot off
 Tax ID# 302.20-14-12