

LABOR AND MATERIALS

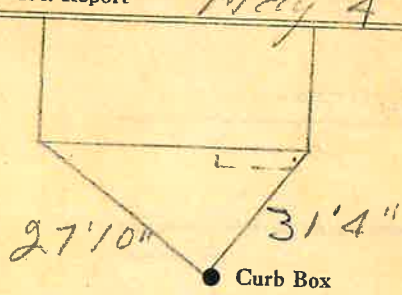
1	Copper	{ Connection	3/4	\$	2.29
	Lead				
1	Curb	{ Cock Valve	3/4 in.	\$	2.70
		{ T. S. & V.			
1	Service box	{ Short 3 1/2 x 4 1/2		\$	4.25
	Old returned	{ Long 4 1/2 x 5 1/2			
		{ Buff or Rdway			
9	Ft. 3/4 in.	{ Copper	Pipe at 35	\$	3.15
		{ G. I.			
		{ C. I.			
	Nipples	in. at		\$	
	Bushings	to in. at		\$	
	Red'g	{ Coupl'gs	to in. at	\$	
	Inc'g				
	Union	in. at		\$	
	Meter	in. at		\$	
	Lead Joints at			\$	
	Compound Joints at			\$	
	Hrs. Water Maint. Man-1 at			\$	
6	Hrs. Water Maint. Man-2 at	1.02		\$	6.12
16	Hrs. Labor	at 91		\$	14.56
	Hrs. Labor	at		\$	
2	Hrs. Compressor at	1.20		\$	2.40
	Compensation Ins. at \$	per C.		\$	46
	Trucking			\$	1.50
	Pav't Patch			\$	8.96
	Copy by Marusinski			\$	
	O'head			\$	
				\$	45.89

35-14-50

St. Notre Dame W.  
Pl. 42  
Ave. No. 42

Name of Owner  
TURNER

Labor and Mat'l. Report May 4 1950



4 Main Elev. of Main at tap 5  
Gate at ● Gate at ●

● Curb Box  
Tax ID # 302.20-14-14